

RESEARCH ARTICLE

Open Access



Transcriptomic analysis links gene expression to unilateral pollen-pistil reproductive barriers

Amanda K. Broz^{1†}, Rafael F. Guerrero^{2†}, April M. Randle^{1,3}, You Soon Baek¹, Matthew W. Hahn^{2,4} and Patricia A. Bedinger^{1*}

Abstract

Background: Unilateral incompatibility (UI) is an asymmetric reproductive barrier that unidirectionally prevents gene flow between species and/or populations. UI is characterized by a compatible interaction between partners in one direction, but in the reciprocal cross fertilization fails, generally due to pollen tube rejection by the pistil. Although UI has long been observed in crosses between different species, the underlying molecular mechanisms are only beginning to be characterized. The wild tomato relative *Solanum habrochaites* provides a unique study system to investigate the molecular basis of this reproductive barrier, as populations within the species exhibit both interspecific and interpopulation UI. Here we utilized a transcriptomic approach to identify genes in both pollen and pistil tissues that may be key players in UI.

Results: We confirmed UI at the pollen-pistil level between a self-incompatible population and a self-compatible population of *S. habrochaites*. A comparison of gene expression between pollinated styles exhibiting the incompatibility response and unpollinated controls revealed only a small number of differentially expressed transcripts. Many more differences in transcript profiles were identified between UI-competent versus UI-compromised reproductive tissues. A number of intriguing candidate genes were highly differentially expressed, including a putative pollen arabinogalactan protein, a stylar Kunitz family protease inhibitor, and a stylar peptide hormone Rapid ALKalinization Factor. Our data also provide transcriptomic evidence that fundamental processes including reactive oxygen species (ROS) signaling are likely key in UI pollen-pistil interactions between both populations and species.

Conclusions: Gene expression analysis of reproductive tissues allowed us to better understand the molecular basis of interpopulation incompatibility at the level of pollen-pistil interactions. Our transcriptomic analysis highlighted specific genes, including those in ROS signaling pathways that warrant further study in investigations of UI. To our knowledge, this is the first report to identify candidate genes involved in unilateral barriers between populations within a species.

Keywords: Interspecific reproductive barriers, Interpopulation interactions, Plant mating system, Pollen-pistil transcriptomes, Self-incompatibility, *Solanum habrochaites*, Unilateral incompatibility, Wild tomato species

Background

Reproductive barriers are critical for maintaining species integrity, and their emergence between populations is associated with decreased gene flow and increased genetic divergence, ultimately leading to speciation. In a number of plant families, including the Solanaceae, a unidirectional

post-mating prezygotic barrier, termed unilateral incompatibility (UI) occurs at the level of pollen-pistil interactions. UI has most often been studied between genera or species [1–5], but there is also evidence of UI between populations of the same species [1, 6–9].

The unidirectionality of UI in crosses between species has been linked to plant mating system and specifically to the self-incompatibility response. Self-incompatible (SI) species are obligate outcrossers, whereas self-compatible (SC) species are capable of producing offspring through

* Correspondence: Bedinger@colostate.edu

†Equal contributors

¹Department of Biology, Colorado State University, Fort Collins, CO 80523-1878, USA

Full list of author information is available at the end of the article



self-pollination. Gametophytic SI is the most common system of incompatibility in flowering plants [10] and in many families it is dependent on the activity of pistil-expressed *S*-locus ribonucleases, or *S*-RNases [11, 12]. Distinct from the sporophytic SI of the Brassicaceae in which pollen is rejected at the stigma surface [13, 14], in gametophytic SI growing pollen tubes are actively rejected within the style [11, 15–17]. This type of *S*-RNase-based SI is genetically determined by the polymorphic *S*-locus, which harbors pistil- (*S*-RNase) and pollen- (*S*-locus F-box) expressed factors that are required for the specificity of the SI response [18–21]. Additional factors have also been implicated in SI, although they do not determine specificity. These include pistil-expressed HT-proteins and 120 K glycoproteins [22–24], as well as pollen-expressed components of the E3 ubiquitin ligase complex (Cullin1 and SKP1) [15, 25–29].

UI generally follows the SI × SC rule, wherein pollen of SC species is unable to fertilize SI ovules, but the reciprocal cross is compatible [4]. Because of this link between SI and UI, initial studies suggested pleiotropic effects of the *S*-locus on interspecific incompatibilities. In fact, more recent studies have shown that the proteins *S*-RNase, HT-protein, *S*-locus F-box 23 and Cullin1 all function in both the SI and UI response, demonstrating mechanistic overlap between these two types of reproductive barriers [26, 28, 30–33]. However, it is also clear that genetic factors other than those involved in SI function in UI.

Crosses between SC species or populations (many of which do not express *S*-RNase) exhibit unexpected incompatibilities [1–4, 7, 31, 34, 35]. This suggests that there are at least two mechanisms underlying UI, one of which is *S*-RNase based and the other of which is *S*-RNase independent. Most SC species exhibit full crossability with other SC species, but recently evolved SC populations of SI species exhibit UI [2, 4]. This suggests that the mechanistic factors underlying *S*-RNase independent UI are also present in populations that contain *S*-RNase. However, the number and type of factors involved in UI remains unclear and most models suggest roles for multiple UI genes of both large and small effect [2, 5, 8, 36].

The existing data on SI and UI in the Solanaceae can be described under a functional architecture in which pollen-side resistance factors are required to overcome pistil-side barriers [37]. In this sense, the presence of barriers in the pistil (such as *S*-RNase and HT) render it competent to reject pollen tubes, whereas resistance factors in pollen (such as SLFs and CUL1) render it competent to overcome pistil-side barriers [37]. As many of the factors involved in UI remain uncharacterized, this architecture of pistil barriers and pollen resistances provides a useful framework in which to view pollen-pistil interactions.

The tomato clade (*Solanum* section *Lycopersicon*) offers ample opportunities to further understand and identify the genes involved in UI [38]. This small clade has recently diverged from a common SI ancestor [39, 40] over the course of ~2.5 million years [41]. The clade harbors six SC species, and seven SI species, three of which contain both SI and SC populations [42]. A number of studies have examined both the physiological aspects [1, 5, 43, 44] and genetic basis [26–28, 30, 31, 33] of UI between members of the clade. In addition, a small number of studies have assessed UI between SI and SC populations within a species [1, 6–9, 44].

The wild tomato *Solanum habrochaites* is an ideal species in which to study both interspecific and interpopulation UI within the context of recently diverged populations. *S. habrochaites* has undergone at least two independent transitions from the ancestral SI state to SC at both the northern and southern species range margins [6, 7, 9, 45]. The loss of SI at the northern range margin is correlated with the loss of pistil-side SI factor *S*-RNase [6, 31, 46]; whereas southern *S. habrochaites* SC populations express a *S*-RNase protein with little or no RNase activity [31]. The genetic structure of *S. habrochaites* is consistent with the spread of populations both north and south from a central origin, with central SI populations showing the highest levels of diversity [45, 47]. Interestingly, the types and strengths of reproductive barriers displayed by a number of populations also follow this same latitudinal axis of divergence [6, 45].

Previous studies have demonstrated variation in the strength of both intra- and interspecific UI in different *S. habrochaites* populations [1, 6–9, 31, 35]. For instance, a central *S. habrochaites* SI population (LA1777) rejects pollen tubes from a subgroup of northern *S. habrochaites* SC populations, including LA0407; whereas LA0407 and other SC populations accept LA1777 pollen tubes [1, 6].

In interspecific interactions, when either SC *S. lycopersicum* or SC *S. neorickii* (as female) is crossed with *S. habrochaites* (as male), crosses result in fruit [48, 49]. In the reciprocal cross, pistils of SI and southern SC populations of *S. habrochaites* rapidly reject interspecific SC pollen after a few millimeters of growth through the style, demonstrating a classic UI response [1, 6, 31]. However, interspecific pollen tube rejection is delayed in many northern SC populations of *S. habrochaites*, [1, 6, 31], and one unique SC population (LA1223) is unable to reject both *S. lycopersicum* and *S. neorickii* pollen tubes [6]. LA1223 is the only known *S. habrochaites* population that does not accumulate the pistil HT-protein [6, 31], which may explain this extraordinary lack of UI at the pollen-pistil level.

Although elegant mapping, biochemical and transgenic studies have revealed that SI factors are important players in UI [12, 23, 26, 28, 30, 31, 33, 50], the full suite

of molecular factors involved in the complex UI response are only beginning to be characterized. The evidence for both interspecific and interpopulation UI in *S. habrochaites* suggests that factors other than those involved in SI are involved in UI. This is consistent with transgenic studies in tomato showing that together S-RNase and HT-protein can act to reject pollen from only a subset SC species, and even then pollen tube rejection is delayed [33].

Transcriptome profiling can provide a broad view of the factors involved in pollen-pistil interactions and represents a powerful tool for candidate gene identification. Studies in *Arabidopsis* have identified large numbers of genes that are specific to pollen or pistil, as well as those that are specifically induced upon the interaction between the two in compatible pollinations [51–54]. However, very few studies have investigated pollen-pistil transcriptomes in response to UI. In a recent study, Pease et al. [55], identified a number of interspecific UI candidate genes by comparing stilar transcriptomes of UI-competent *S. pennellii* and UI-deficient *S. lycopersicum*, two species which likely diverged over 2 mya [41]. Their results identified a large number of loci that varied in expression between styles of these two species, and highlighted the importance of HT-protein in UI [55].

Here, we used a similar transcriptomics approach to broadly characterize the molecular factors involved in UI in *S. habrochaites* at the level of pollen-pistil interactions. The populations selected for study have recently diverged (< 0.8 mya, [41]), and exhibit differences in both interspecific and interpopulation reproductive barriers. To our knowledge, this is the first report using transcriptomics to identify novel candidate genes associated with reproductive barriers between diverging populations within a species.

Results

Pollen-pistil interactions in SI LA1777 and SC LA0407

Using pollen tube growth assays, we confirmed that all LA1777 (SI) individuals used in RNA-seq experiments rejected both self-pollen tubes and those of LA0407, but accepted pollen from other LA1777 individuals (intrapopulation). Further, we confirmed that each LA0407 (SC) individual accepted pollen tubes from LA1777, self, and intrapopulation crosses.

In compatible crosses, pollen tubes generally reach the ovary within 24 h [1, 31]. However, incompatible crosses may differ in the timing of pollen tube rejection [1]. To identify the post-pollination time-point at which pollen tube rejection occurs in the incompatible cross between LA1777 (female) and LA0407 (male), pistils were pollinated and harvested over a time course. Pistils of LA1777 were actively rejecting pollen of LA0407 at 12 h post-pollination, and full rejection occurred by 48 h (Fig. 1). Although important changes in gene expression may

occur immediately after pollination and at early time-points in pollen tube rejection, we chose to harvest stilar tissue 16 h post-pollination for subsequent RNA-seq experiments in an attempt to capture changes in gene expression corresponding to active pollen tube rejection in the style. At this point, incompatible pollen tubes will have traversed ~20% of the style length (Fig. 1), whereas compatible pollen tubes will have traversed ~60% of style length (Fig. 1, [31]).

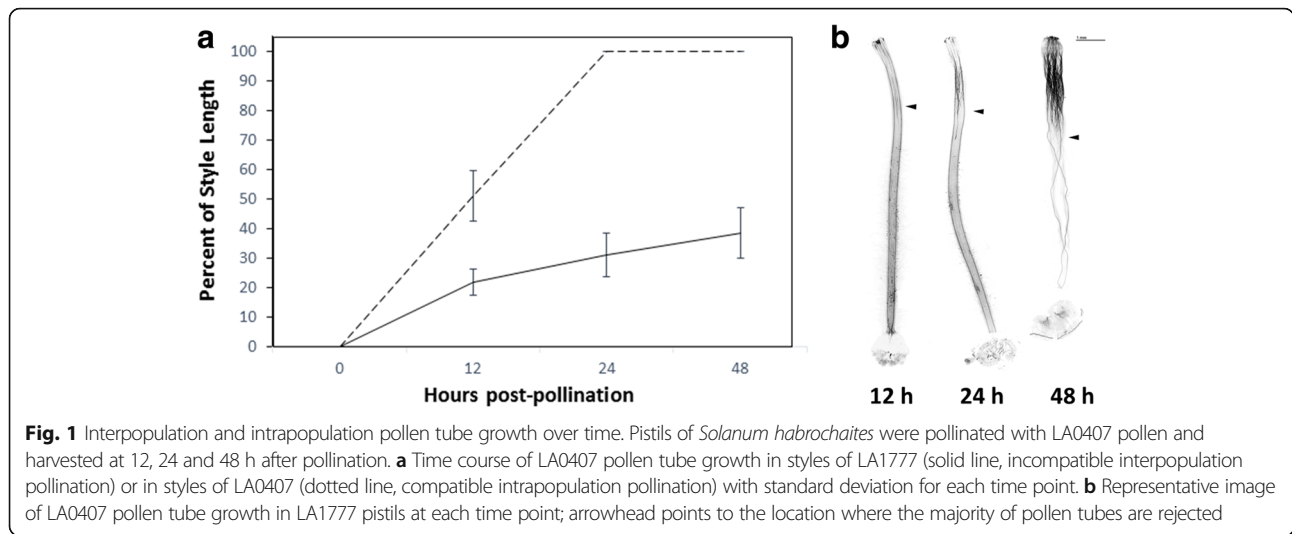
Differential gene expression between UI-competent and compromised populations

We sampled both pollen and stilar tissue to better characterize differences in transcriptomes between UI-competent LA1777 and UI-compromised LA0407 (Fig. 2). Styles were either unpollinated (UP) or subject to three different treatments including self, intrapopulation and interpopulation pollination; whereas pollen was subjected to a single treatment (ungerminated) (Fig. 2). We considered pistils of LA1777 to be “UI-competent” because they contain functional barriers that allow for the rejection of self, interpopulation and interspecific pollen tubes [1, 6, 31]. Alternatively, we considered pistils of LA0407 to be “UI-compromised” because a loss of barriers has resulted in the inability to reject self, interpopulation and some types of interspecific pollen tubes [1, 6, 31]. In the case of pollen, we also considered LA1777 to be “UI-competent” because it harbors pollen-side resistance factors that render it competent to overcome pistil-side barriers, whereas LA0407 pollen is considered “UI-compromised” because it is rejected by all SI pistils [1, 6, 31].

We analyzed a total of 33,055 genes, out of which 7358 (22.3%) were specific to pollen (that is, they were upregulated in pollen with respect to all styles), and 4793 (14.5%) were specific to styles. Additionally, we found 1492 genes that were highly upregulated only in tissues of LA1777 and 1382 genes highly upregulated only in LA0407 (4.5% and 4.2% of genes analyzed, respectively).

Pollination type significantly influences a small number of genes

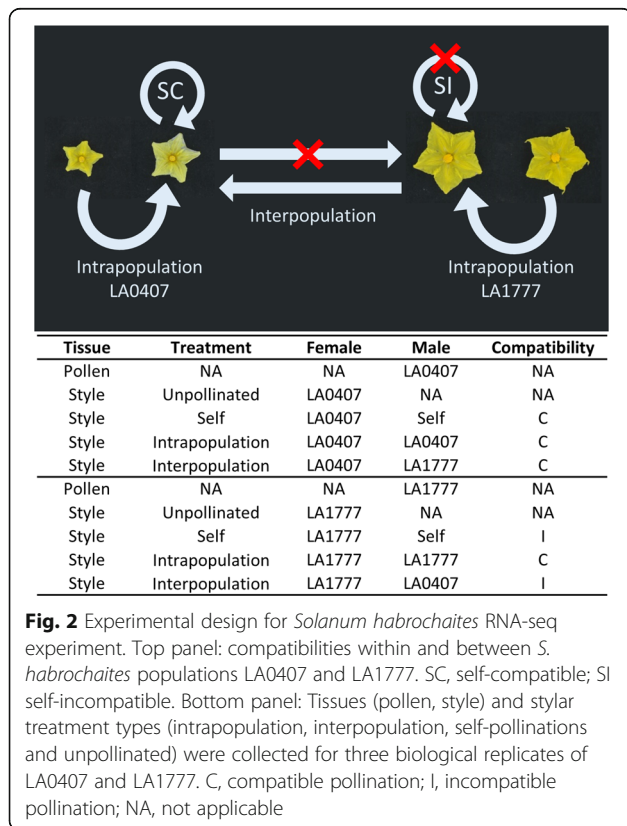
We expected that stilar transcriptomes would exhibit differences due to the type of pollination and whether or not a pollination was compatible. We performed three separate pairwise comparisons to look at differential gene expression in UP LA1777 styles compared to different pollination types (intrapopulation, self and interpopulation). Pairwise comparisons between pollinated and UP LA1777 styles revealed only a small number of differentially expressed genes, all of which were expressed at very low levels (< 0.3 counts per million (cpm); Additional file 1: Table S1 (self vs UP), Additional file 1: Table S2 (intrapopulation vs UP) and Additional file 1: Table S3 (interpopulation vs UP)). In



all pollination treatments we identified pollination-induced differential expression of a number of hypothetical proteins, RNA-directed DNA Polymerases and retrovirus-related Reverse Transcriptases. However, only three genes showed similar regulation among all pollination treatments: a hypothetical protein (Sopen05g010690) and two genes that have high homology to a Copia-like retrotransposon (Sopen01g019140 and Sopen02g008750).

Five genes were similarly differentially expressed in incompatible crosses with LA1777 as female (self and interpopulation crosses; Additional file 1: Table S1 and Table S3) versus compatible crosses (intrapopulation; Additional file 1: Table S2), three of which encoded hypothetical proteins. In addition, a cystathionine beta synthase (CBS) domain-containing protein (Sopen06g019460) was downregulated 3-fold in incompatible crosses. It has been proposed that CBS proteins are redox regulators involved in the modification of cell wall composition, and in *Arabidopsis*, changes in CBS expression can reduce self-fertility [56]. A homolog of *Defective meristem silencing 3* (DMS3, Sopen03g019410), a gene that is involved in silencing and epigenetic modification [57], was also downregulated 3-fold in incompatible crosses.

Thirty two genes were differentially regulated between interpopulation pollination and UP styles (Additional file 1: Table S3), but not in other treatments (self vs UP; Additional file 1: Table S1 or intrapopulation vs UP; Additional file 1: Table S2). Interesting candidates including a Ras-related GTPase (Sopen04g023040, Rab3), a pollen specific Calcium-Binding Annexin (Sopen04g003390), and a K⁺ Transporter (Sopen11g006300) were upregulated ~3-fold in interpopulation pollinations. Another candidate gene, upregulated 16-fold in interpopulation pollinations encodes a H₂O₂ transporter (Sopen10g033580, PIP2). Each of these genes are potentially involved in reactive oxygen species (ROS) signaling during pollen-pistil interactions [58–62], and their upregulation in interpopulation pollinations may alter ROS signaling, resulting in the dysfunctional pollen tube growth characterized by UI. Further, in interpopulation pollinations, an Endonuclease was upregulated over 18-fold, and a DNase over 2.9 fold. Intriguingly, in *Pyrus pyrifolia* and *Papaver rhoeas*, the disruption of ROS



signaling in incompatible (self) pollen tubes leads to depolymerization of the actin cytoskeleton and an increase in nuclear DNA degradation [63, 64].

Differential gene expression related to UI-competence in styles

Although a number of potentially interesting candidates involved in UI were identified from our pairwise comparisons, they were expressed at relatively low levels, often showed only low fold-changes, and had relatively high p -values ($p < 0.05$). A principal components analysis (PCA) of all stilar treatments showed that most of the variation between samples could be explained by source population, and that there was no consistent grouping of styles due to pollination treatment (Additional file 2: Figure S1). The fact that few significant differences were detected between UP styles and pollination treatments may reflect results of previous studies indicating that the genes involved in UI-competence are expressed in styles regardless of pollination status [31, 38, 55]. In other words, the UI-competent styles appear 'primed' to reject incompatible pollen, as large changes in gene expression are not seen between UP styles and those pollinated with compatible versus incompatible pollen parents. Because of these results, we also performed an analysis in which all stilar treatments within a population (UP, pollinated with self, intrapopulation and interpopulation pollen) were pooled to capture differential expression between UI-competent (LA1777) versus UI-compromised (LA0407) styles.

We identified 179 genes that were significantly upregulated in UI-competent versus compromised styles, and 179 that were significantly downregulated (Additional file 1: Table S4 and Table S5). However, we focused our interest predominantly on genes that showed a mean expression level over 3 normalized cpm and were upregulated over 10-fold in UI-competent versus compromised styles. The top 25 genes showing the largest upregulation in UI-competent styles are shown in Table 1.

Within the top 25 genes showing the highest upregulation in UI-competent versus compromised styles, we found ten that are involved in oxidation-reduction reactions (Table 1). These included three Cytochrome P450 genes (Sopen02g037430, Sopen06g021780, Sopen07g028940), an Alkenal Reductase (Sopen12g006330), a Glutathione S-Transferase (Sopen12g026980), an NAD(P)H-Dehydrogenase (Sopen05g003640), and an NAD(P)-Oxidoreductase (Sopen12g021490). In addition, we identified two genes involved in early steps of flavonoid biosynthesis: Chalcone Synthase 2 (Sopen05g032070) and Chalcone-Flavanone Isomerase (Sopen05g030780). Finally, we discovered that the gene showing the highest upregulation in UI-competent styles (hypothetical protein, Sopen12g017530) contains a heavy metal-associated domain

(Additional file 2: Figure S2), suggesting that it also may be involved in oxidation-reduction reactions.

In UI-competent styles, we also identified three upregulated genes that are putatively involved in defense responses. These included an Endo-Chitinase involved in jasmonic acid and ethylene signaling (Sopen02g027710) that was highly expressed (182 cpm) and upregulated over 20-fold, a Beta-Glucosidase (Sopen11g004500) and a Disease Resistance Protein (Sopen10g025030) (Table 1). These genes are of interest, as many molecular components involved in plant-pathogen interactions show significant overlap with those involved in pollen tube growth and guidance [65].

One gene of particular interest that was highly upregulated in UI-competent styles is the hypothetical protein Sopen02g033850 (Table 1), which shows 80% amino acid identity to the peptide hormone Rapid Alkalinization Factor (RALF) from the wild potato, *S. chacoense*. Small secreted peptides including RALFs are involved in a wide variety of plant functions including development and immunity [66], and a pollen-specific RALF from *S. lycopersicum* (SIPRALF) was found to negatively regulate pollen tube elongation in vitro [67]. We also identified a protein involved in oligo-peptide transport (Sopen05g001950) which was upregulated >28-fold in UI-competent styles and may be involved in the transport/secretion of peptide hormones such as RALFs.

Another gene of interest that was highly upregulated in UI-competent versus compromised styles was a Kunitz family protease inhibitor (Table 1). In *Nicotiana*, the Kunitz Family Protease Inhibitor, NaStep, is highly expressed in the pistils of SI species and is thought to stabilize HT-proteins, although the mechanistic basis of this interaction remains unknown [68]. The NaStep protein is taken up by both compatible and incompatible pollen tubes, and the transgenic suppression of *NaStep* in SI *Nicotiana* species compromises rejection of both self- and some types of interspecific pollen tubes [68]. The reduced expression of this gene in UI-compromised LA0407 may reflect this population's lack of ability to reject some types of interspecific pollen tubes [1, 6].

Although we were most interested in genes showing the highest upregulation in UI-competent styles, we also analyzed genes that are highly downregulated. We found that three of the top 25 most highly downregulated genes in UI-competent styles were involved in oxidation-reduction reactions, and one was putatively involved in defense response (Additional file 1: Table S5). Notably, five of the top 25 genes downregulated in UI-competent styles are putatively involved in cell wall modification (Additional file 1: Table S5). These include two Pectin Lyases (Sopen12g009500 and Sopen01g038750), a Glucosyltransferase (Sopen00g008620) and two Glycosyl Hydrolases (Sopen04g034210 and Sopen07g001240), all of which

Table 1 Top-25 upregulated genes in styles of LA1777 vs. LA0407

Gene	<i>p</i> value	Mean expression	Fold change	Annotation
Sopen12g017530.1	1.9E-20	3.8	1451.4	[HP] Hypothetical protein; Contains DUF pfam0403, heavy metal-associated
Sopen02g037430.1	4.1E-17	4.2	163.8	Cytochrome P450; family 81, subfamily D
Sopen05g032070.1	3.8E-14	9.2	154.9	Chalcone Synthase 2; flavonoid biosynthesis
Sopen06g021780.1	5.1E-13	3.9	116.2	Cytochrome P450; family 71, subfamily B
Sopen01g011020.1	4.0E-21	75.9	108.4	Hypothetical protein
Sopen12g006330.1	8.4E-15	22.2	58.6	2-Alkenal Reductase; involved in response to oxidative stress
Sopen08g021280.1	3.4E-11	8.4	51.8	Chlorophyll a-b Binding Protein 3C
Sopen12g026980.1	5.7E-14	4.0	36.6	Glutathione S-Transferase; involved in stress response
Sopen05g003640.1	2.8E-19	4.3	35.6	NAD(P)H Dehydrogenase subunit; in chloroplast, PsbQ-like 2
Sopen09g003470.1	6.1E-06	10.3	32.1	Threonine Dehydratase; isoleucine biosynthesis, plastid
Sopen04g002110.1	4.9E-12	5.2	29.6	Programmed Cell Death 6-Interacting Protein; endosomal
Sopen05g001950.1	2.6E-17	4.3	28.7	Major facilitator superfamily; oligopeptide transport protein
Sopen07g028940.1	4.8E-11	4.5	26.7	Cytochrome P450; family 72, subfamily A
Sopen02g033850.1	1.7E-10	10.6	22.0	[HP] Hypothetical protein; 80% identity to <i>Solanum chacoense</i> RALF-like5
Sopen02g027710.1	6.0E-09	182.2	20.2	Acidic Endochitinase; involved in defense response
Sopen02g022730.1	2.5E-11	5.4	19.6	Dormancy-associated auxin-repressed small protein
Sopen02g021850.1	2.2E-11	3.4	18.9	Transcription factor; bHLH30-like DNA binding superfamily
Sopen12g021490.1	7.0E-18	10.2	17.4	NAD(P)-linked Oxidoreductase superfamily protein; involved in stress response
Sopen10g025030.1	3.1E-09	4.9	14.9	Dirigent-protein like 22; involved in defense response
Sopen11g004500.1	2.8E-08	3.8	14.4	Beta Glucosidase 42 (BGLU42)
Sopen12g006340.1	6.6E-11	5.2	14.4	Transferase, HXXXD-type acyl-transferase family protein
Sopen01g047950.1	1.6E-04	17.7	14.0	ABC Transporter G family member 11-like; cutin or wax export, stress response
Sopen10g001450.1	8.8E-18	3.2	13.4	Hypothetical protein, chloroplast
Sopen03g029620.1	1.0E-04	6.8	12.8	Kunitz family trypsin and protease inhibitor (similar to Miraculin)
Sopen05g030780.1	3.7E-12	18.8	12.8	Chalcone-Flavanone Isomerase family protein

Gene annotation from Spenn_v2.0 was enhanced, when possible, for genes noted as hypothetical proteins (marked as [HP])

were downregulated over 13-fold. Eight additional genes involved in cell wall modification were downregulated in UI-competent styles, although to lesser extents (Additional file 1: Table S5).

In addition to our analysis of genes that are highly up- or downregulated in UI-competent versus compromised styles, we investigated the expression of 33 a priori candidates (Additional file 1: Table S6) based on reports in the literature of stylar genes that may be involved in UI [26, 28, 31, 55]. These candidates included genes that were identified in a recent study comparing stylar transcriptomes between UI-competent *S. pennellii* LA0716 and the cultivated tomato *S. lycopersicum* M82 which shows no UI response [55]. Only three of the 33 a priori candidates showed over a 2-fold increase in styles of UI-competent LA1777 versus UI-compromised LA0407 (Additional file 1: Table S6). These included a Pectin-Methylesterase Inhibitor (Sopen04g027820, upregulated

2.4-fold) and two Glucosyltransferases (Sopen08g002330 and Sopen08g002350, both upregulated over 8-fold); however all were expressed at low levels, < 1 cpm. HT-protein, a small asparagine-rich protein required for S-RNase-based UI [33] was highly expressed in styles from both populations and was downregulated slightly in LA1777 (HT-A, 1.3-fold). Interestingly HT-B transcript was expressed in both populations, although neither population accumulates functional protein due to an early stop codon in the transcript [31]. Each individual of LA1777 harbored two unique S-RNase alleles as expected (data not shown), whereas LA0407 did not express S-RNase transcript, as has been documented in previous studies [31].

Differential gene expression related to UI-competence in pollen
As coordinated interactions between pollen and pistil are required for successful fertilization, we also compared

pollen transcriptomes between populations. Pollen tubes of LA1777 reach ovaries of all SI and SC species within the tomato clade [1]. However, LA0407 pollen tubes are rejected by all SI species, including by SI *S. habrochaites* LA1777 [1]. The inability of LA0407 pollen to traverse the styles of LA1777 and other SI *Solanum* species suggests that it has lost a pollen factor(s) required for S-RNase resistance. For our analysis, we therefore considered LA1777 pollen to be UI-competent, and LA0407 pollen to be UI-compromised.

We used dry mature pollen in our RNA-seq analysis because genes previously identified in UI in tomato (CUL1 and SLF23) have high levels of gene expression in dry/ungerminated pollen [26, 28]. However, it is acknowledged that some pollen-specific genes important in UI may require induction through hydration or interaction with pistil tissues, and these would not have been captured in our analyses.

We identified 90 genes that were upregulated in UI-competent pollen (Additional file 1: Table S7) and 99 that were downregulated (Additional file 1: Table S8). Ten of the top 25 genes upregulated in UI-competent versus UI-compromised pollen were annotated as hypothetical proteins (Table 2; Additional file 1: Table S7). Upon further analysis, the hypothetical gene with the highest upregulation in UI-competent pollen (Sopen12g014190) likely encodes an Arabinogalactan Protein (AGP) (Additional file 2: Figure S2). In *Arabidopsis*, pollen AGPs are required for proper pollen tube development and growth [69–71], and pistil AGPs are known to stimulate pollen tube growth [70–73]. We also identified a Rab-GTPase (Rab4A, Sopen01g033860) that was upregulated nearly 200-fold in UI-competent pollen. Pollen specific proteins from this family have been found to promote pollen tube tip growth and play a role in the ability of the pollen tube to sense directional cues [74, 75].

Table 2 Top-25 upregulated genes in pollen of LA1777 vs. LA0407

Gene	<i>p</i> value	Mean expression	Fold change	Annotation
Sopen12g014190.1	9.3E-05	26.2	2922.0	[HP] Putative GPI-anchored AGP
Sopen01g010170.1	4.1E-04	3.7	1138.1	Hypothetical protein
Sopen12g018710.1	1.1E-05	2.7	598.0	KH Domain RNA-Binding Protein
Sopen06g022970.1	7.5E-05	2.7	591.3	Isoflavone-7-O-Methyltransferase 9; flavonol biosynthesis
Sopen05g003280.1	3.0E-04	5.2	397.0	F-box Protein CPR1/30; negative regulator of defense response
Sopen09g012310.1	7.7E-04	1.9	318.1	Ribonuclease H-like superfamily protein; possible non-LTR retrotransposon family (LINE)
Sopen10g022570.1	2.7E-05	1.9	287.3	Hypothetical protein
Sopen08g010210.1	7.1E-04	1.8	277.0	[HP] Possible retroelement
Sopen01g033860.1	2.2E-04	1.5	198.4	RabA4 subfamily of Rab GTPases; promotes tip growth of pollen tubes
Sopen01g032940.1	3.6E-04	1.5	189.8	Aspartyl Protease family protein, CDR1-like
Sopen12g018720.1	2.0E-04	1.4	168.0	Hypothetical protein
Sopen12g022970.1	6.9E-04	1.3	154.6	F-box/RNI superfamily; plant-specific FBD domain
Sopen08g010180.1	6.2E-04	1.2	130.0	Hypothetical protein
Sopen03g005740.1	1.5E-04	1.1	105.8	Acyl Activating Enzyme, benzoate-CoA ligase
Sopen03g020850.1	5.5E-04	1.1	98.6	Possible transcription factor; VND-interacting 1, NAC domain
Sopen12g027860.1	5.6E-04	1.0	86.2	[HP] possible non-coding RNA
Sopen05g018880.1	1.6E-04	1.5	84.7	Hypothetical protein
Sopen10g022630.1	7.8E-04	0.9	74.6	[HP] Non-coding RNA
Sopen10g023190.1	2.1E-04	0.9	71.5	[HP] Possible LTR retrotransposon
Sopen06g021510.1	5.4E-05	0.9	71.4	Zeatin O-Glucosyltransferase-like
Sopen12g006170.1	4.6E-06	9.5	70.0	Basic Leucine Zipper 34-like, transcription factor
Sopen03g007850.1	1.7E-04	0.8	57.8	Tetratricopeptide Repeat (TPR)-like superfamily protein; pre-mRNA splicing factor SYF1
Sopen10g028190.1	3.2E-04	1.1	52.6	Wall-associated Receptor Kinase (WAK2-like), Ca ²⁺ binding, cell wall expansion
Sopen02g013470.1	6.6E-04	1.1	50.4	Cysteine-rich RLK
Sopen10g022640.1	5.4E-04	0.8	48.8	[HP] Non-LTR retrotransposon family (LINE)

Gene annotation from Spenn_v2.0 was enhanced, when possible, for genes noted as hypothetical proteins (marked as [HP])

Our analysis of pollen also identified differentially expressed genes that may be involved in protein degradation pathways (Table 2; Additional file 1: Table S7 and Table S8). These genes are of interest, as components of a pollen SCF (Skp-Cullin-F-box) E3 ubiquitin ligase complex have been implicated in both SI and UI, and are potentially involved in detoxifying pistil side factors such as S-RNases through the proteasomal degradation pathway [11, 15, 21, 26, 27, 29, 76]. We found two F-box/Skp2-like genes (Sopen05g003280 and Sopen12g022970) that were upregulated over 150-fold in UI-competent pollen (Table 2). Another gene involved in protein degradation, an aspartyl protease (Sopen01g032940) was upregulated 189-fold in UI-competent pollen (Table 2). No previously identified SLFs [28] were significantly differentially regulated, nor was the pollen UI factor Cullin1 [26] (Additional file 1: Table S9).

We identified two protein kinases that were upregulated over 50-fold in UI-competent pollen, one of which encodes a calcium binding serine/threonine wall-associated kinase (Sopen10g028190), and the other a cysteine-rich receptor like kinase (RLK) (Sopen02g013470) (Table 2). Because RLKs have a proven role in pollen tube growth [77], these genes are of potential interest. Further, pollen-expressed RLKs are involved in reception of peptide and hormone signals from the pistil [78–80].

Genes involved in transcriptional regulation are likely to be important components of pollen tube growth. We identified two types of transcription factors known to play key roles in stress response [81, 82] that were highly upregulated in UI-competent pollen: a NAC-domain containing protein (Sopen03g020850) and a bZIP family protein (Sopen12g006170) that has previously been localized to pollen (Table 2; Additional file 1: Table S7).

An analysis of genes that were highly downregulated in UI-competent pollen identified an F-box Protein

(Sopen11g004020) and a Cysteine-rich RLK (Sopen05g014070) that were downregulated over 45- and 100-fold respectively (Additional file 1: Table S8). Genes showing over 100-fold decreases in UI-competent pollen also included two Histone Deacetylases (HDACs, Sopen11g004040 and Sopen11g004050; Additional file 1: Table S8). The proper function of HDACs has been linked to successful pollen tube germination and tip growth in *Picea willsoni* [83].

UI competence in additional *S. habrochaites* populations

Our initial analyses comparing transcriptomes of LA1777 and LA0407 reproductive tissues led to some intriguing candidates that might be integral to UI. In an attempt to further narrow down candidate gene and to expand our analysis to a broader range of *S. habrochaites* populations, we performed a second RNA-seq experiment that included UP styles and pollen from *S. habrochaites* populations with selected phenotypes (Table 3; Additional file 1: Table S10).

First we confirmed that the UI phenotypes of the individuals tested reflected previous results [6] (phenotypes summarized in Table 3). A PCA of all samples shows that much of the sample variation (1st PC) can be explained by tissue type, whereas a smaller percentage of variation (2nd PC) is explained by source population and potentially mating system (Fig. 3). Interestingly, the additional populations selected for transcriptome analysis, which lie between LA1777 and LA0407 geographically, cluster between these two populations in the PCA.

For each gene, we trained a linear discriminant function for UI-competence on the expression values for LA1777 and LA0407, and then classified gene expression in other populations as UI-competent or UI-compromised. We took into account the UI patterns of these populations with LA0407, as well as previously reported results on

Table 3 *Solanum habrochaites* populations used in this study

Country	Province or Department	Population/Accession ^a	Mating system ^b	Interpopulation UI ^c		Interspecific UI ^c	
				Pollen accepted by LA1777	Accepts pollen of LA0407	Accepts pollen of <i>S. neorickii</i>	Accepts pollen of <i>S. lycopersicum</i>
Ecuador	Guayas	LA0407	SC	I	SC	C	I
Ecuador	Chimborazo	LA1223	SC	I ^d	C	C	C
Ecuador	Chimborazo	LA1264	SC	C	C	I	I
Ecuador	Loja	LA2119	SC	C	C	I	I
Ecuador	Loja	LA2098	SI/SC	C	I	I	I
Peru	Ancash	LA1777	SI	SI	I	I	I

SC self-compatible, SI self-incompatible, C compatible, I incompatible

^aall populations and passport information was acquired from the Tomato Genetics Resource Center (TGRC, <http://tgrc.ucdavis.edu>, [104]) at the University of California, Davis

^bmating system was verified experimentally, and is consistent with data from the TGRC, Rick et al. 1979 and Broz et al. [6, 45]

^cinterpopulation and interspecific UI as reported in Broz et al., [6]

^dpollen of the LA1223 individual used in this experiment was not accepted by LA1777, Broz et al., [6] reports variation in individual LA1223 phenotypes for this cross

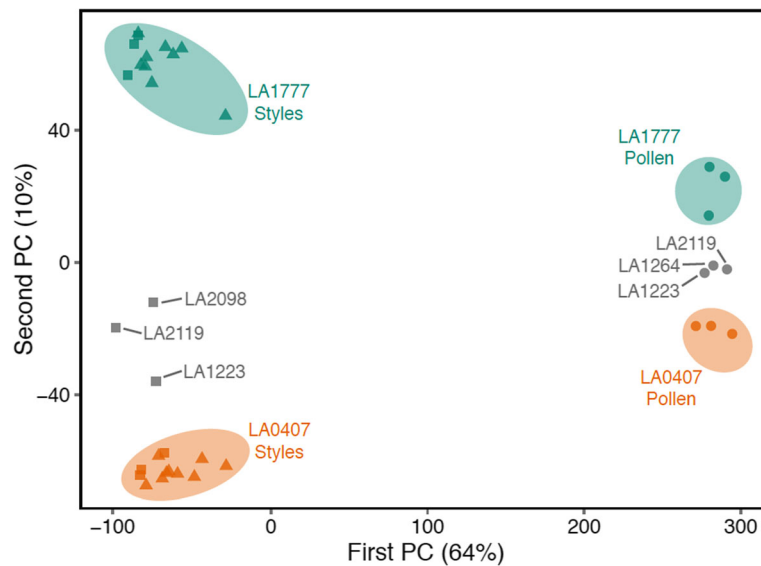


Fig. 3 Genome-wide variation in gene expression across five populations of *Solanum habrochaites*, summarized by their first two principal components. The largest source of variation results from differences in expression between pollen (circles) and styles (unpopollinated, squares; popollinated, triangles), on the first PC (horizontal axis). Variation across populations, on the other hand, accumulates on the second PC (vertical axis)

interspecific UI ([6], summarized in Table 3). Because styles of LA2119 are unique in that they accept interpopulation LA0407 pollen while rejecting interspecific pollen, we interpret the information in Table 4 to reflect the variation in UI phenotype of LA2119 styles: i.e., genes that are up in LA2119 are top candidates in interspecific UI, whereas genes that are down in LA2119 are top candidates in interpopulation UI.

The top candidates for interspecific UI-competence in styles identified in the linear discriminant analysis (LDA) included the hypothetical protein Sopen01g011020, that is highly expressed and upregulated >100-fold (Table 4). Six genes potentially involved in oxidation-reduction reactions were identified including the NAD(P)-Linked Oxidoreductase (Sopen12g021490), a Cytochrome P450 (Sopen07g030750), a Lipid Oxidoreductase (Sopen06g026260), a Heavy Metal Transport Protein (Sopen05g028380), a Peroxisomal Membrane Protein (Sopen03g005470), and the Photosystem I Reaction Center (a Ferredoxin Oxidoreductase, Sopen12g006800).

Top candidates for interpopulation UI-competence in styles identified in the LDA included two potentially involved in ROS signaling (Table 4). A DELLA-like transcription factor (Sopen01g0311700) which is responsive to gibberellins [84] and participates in ROS signaling by regulating ROS accumulation [85], was upregulated 11-fold. A Hemoglobin Protein (Sopen08g021970) containing redox active transition metals was upregulated 3-fold. Other interpopulation UI candidates included the cell wall synthesis protein Alpha-1,4-Glucan-Protein Synthase (Sopen05g006860), an Alpha/beta Hydrolase family protein (Sopen11g

005210), a P-Glycoprotein ABC Transporter-like protein (Sopen08g025270) and an F-box-LRR Protein (Sopen12g006260).

The LDA of pollen genes was more straightforward in that LA2119 and LA1264 were expected to be UI-competent (i.e., similar to LA1777) whereas LA1223 is UI-compromised and may be missing pollen factor(s) required to traverse SI styles. As shown in Table 5, using the LDA we identified 22 genes that were upregulated in UI-competent pollen. Two genes, upregulated >25-fold, encode F-box proteins that are both putatively involved in the ubiquitin ligase complex (Sopen03g040880 and Sopen01g027170). In addition, a RAPTOR/KOG kinase homolog that is associated with the CUL4 RING ubiquitin ligase complex (Sopen10g027930) was upregulated 12-fold in UI-competent pollen, and an annexin-like calcium binding protein (Sopen05g030530) putatively involved in calcium signaling and polysaccharide transport was upregulated over 4-fold. Two transcription factors were also identified in the analysis: Sopen12g027920 encodes a suppressor of FRI1 that may act to recruit Histone H3 Methyltransferases and Sopen11g020250 encodes a Zinc Finger Transcription Factor.

Discussion

Although UI is widespread in plant families, the underlying molecular basis of this unidirectional reproductive barrier is not well understood. Here, using a transcriptomic approach, we identified genes in both pollen and stylar tissues that represent strong candidates for involvement in UI. Overall, our analyses identified a large

Table 4 Upregulated genes in styles of LA1777 vs. LA0407 that show concordant expression patterns

Gene	p value	Mean expression	Fold change	Annotation
Interspecific UI (upregulated in LA2119)				
Sopen01g011020.1	4.0E-21	75.9	108.4	Hypothetical protein
Sopen12g021490.1	7.0E-18	10.2	17.4	NAD(P)-linked Oxidoreductase
Sopen07g030750.1	1.0E-13	4.7	6.1	Cytochrome P450 (CYP72A15)
Sopen06g026260.1	5.5E-17	39.4	4.7	Oxidoreductase, involved in lipid metabolic process
Sopen05g028380.1	2.0E-08	7.9	3.6	Heavy metal transport/detoxification superfamily protein
Sopen10g033870.1	1.4E-10	12.7	3.3	RING/U-box superfamily protein
Sopen12g006800.1	3.2E-13	73.7	3.1	Photosystem II, Light-harvesting Chlorophyll B-binding protein
Sopen06g019380.1	1.6E-14	108.4	3.1	Photosystem I Reaction Center Subunit II
Sopen03g005470.1	1.2E-13	6.9	3.0	Peroxisomal Membrane 22 kDa (Mpv17/PMP22) family protein
Interpopulation UI (downregulated in LA2119)				
Sopen10g001450.1	8.8E-18	3.2	13.4	Unknown chloroplast stroma protein
Sopen01g031170.1	5.3E-06	9.9	11.0	Transcription factor GRAS, DELLA-like protein
Sopen05g006860.1	7.4E-14	74.6	6.5	Alpha-1,4-Glucan-Protein Synthase, involved in cell wall biogenesis
Sopen11g005210.1	6.8E-19	33.1	5.3	Alpha/beta-Hydrolases superfamily protein, Serine Hydrolase
Sopen11g028080.1	7.3E-16	5.2	4.2	DHBP, RibB-like; 3,4-Dihydroxyl-2-Butanone 4-Phosphate Synthase
Sopen08g025270.1	7.9E-12	54.7	4.1	ABC-transporter-like, P-Glycoprotein 2 (PGP2)
Sopen03g006340.1	5.2E-13	19.1	3.6	Unknown function (DUF827)
Sopen07g027150.1	3.4E-10	131.8	3.5	Phosphoenolpyruvate Carboxylase (PEPC)
Sopen12g001030.1	1.1E-08	9.2	3.4	RING/U-box superfamily protein
Sopen04g034310.1	1.4E-09	2.8	3.4	HXXXD-type Acyl-transferase family protein
Sopen11g001350.1	2.6E-11	11.0	3.1	Plastid-lipid Associated Protein PAP / fibrillin family protein
Sopen08g021970.1	2.8E-13	17.8	3.1	Hemoglobin Protein 3 (GLB3)
Sopen12g006260.1	5.1E-13	3.9	3.1	F-box/LRR Protein, MAX2

A linear discriminant function was trained on the expression values of LA1777 and LA0407, and then used to classify other accessions as UI or non-UI

number of differentially expressed genes that are involved in oxidation-reduction reactions and ROS signaling. Oxidative stress response is involved in a variety of plant physiological processes, including reproduction [58, 60, 86–88]. The production of ROS in plants generally results in one of two outcomes: adaptation to stress or programmed cell death [86]. The balanced interplay between pollen and pistil ROS production can display either of these results: signaling and detoxification are required for successful fertilization (adaptation to stress) and can also function in the incompatible (SI) response (cell death of incompatible pollen tubes). For example, in the Papaveraceae, ROS are recognized as key regulators of programmed cell death in incompatible (self) pollen tubes [64, 89] and recent studies of Rosaceae family member *Pyrus pyrifolia* have demonstrated a link between ROS accumulation, Ca²⁺ signaling, calmodulin levels and

actin filament depolymerization during self-pollen tube rejection [63, 90]. One of the first indications that ROS might be involved in pollen tube growth and cross-compatibilities in the Solanaceae came from histochemical staining in styles of *Petunia hybrida*, which demonstrated that peroxidase activity is found in unpollinated styles and decreases following compatible pollinations, but remains high during incompatible self-pollinations [91]. This pattern is also observed in an analysis of cytochrome P450 (CYP51G1-Sc) in the wild potato *S. chacoense*, where in compatible pollinations, mRNA levels of CYP51G1-Sc declines, but in incompatible (self) pollinations, levels of this cytochrome remain stable.

In our pairwise comparisons investigating changes between UP and pollinated styles, we found increases in ROS pathway members in incompatible interpopulation pollinations (Additional file 1: Table S3) but not incompatible self-

Table 5 Upregulated genes in pollen of LA1777 vs. LA0407 that show concordant expression patterns

Gene	<i>p</i> value	Mean expression	Fold change	Annotation
Sopen05g018880.1	1.58E-04	1.5	84.7	Hypothetical protein
Sopen03g040880.1	8.68E-06	0.7	36.0	RNI-like, F-box, ubiquitin-protein ligase activity
Sopen01g027170.1	7.75E-05	0.6	28.5	RNI-like, F-box, Skp2-like
Sopen02g038110.1	7.81E-06	0.6	24.9	Cytochrome P450 724B1
Sopen02g036410.1	1.18E-05	64.8	16.7	Putative Hexokinase
Sopen12g026740.1	3.26E-04	114.7	11.9	Hypothetical protein
Sopen10g027930.1	4.98E-04	5.0	11.9	RAPTOR/KOG homolog located in CUL4 RING ubiquitin ligase complex
Sopen01g008220.1	1.05E-04	1.9	9.3	Hypothetical protein
Sopen05g029540.1	2.80E-04	0.4	8.8	RNA-directed DNA polymerase
Sopen01g028020.1	5.26E-05	3.4	7.3	Hypothetical protein
Sopen12g027920.1	4.39E-05	0.3	7.0	Zinc Finger Transcription Factor SUF4, involved in histone methylation
Sopen12g004180.1	3.29E-04	112.9	4.6	Oligouridylate Binding Protein 1B
Sopen01g005900.1	1.36E-04	111.6	4.5	Hypothetical protein
Sopen05g030530.1	3.09E-04	20.8	4.5	Annexin, Ca ²⁺ -binding protein
Sopen03g024730.1	4.76E-05	5.5	3.9	DNA Helicase
Sopen03g027800.1	2.34E-04	10.9	3.8	Exostosin
Sopen02g038520.1	6.46E-04	247.3	3.7	Lysine-Histidine Transporter (LHT1)
Sopen11g020250.1	4.01E-04	5397.5	3.7	GATA Type Zinc Finger Transcription Factor
Sopen06g022340.1	4.85E-04	6.5	3.5	Disease resistance/zinc finger/chromosome condensation-like region domain containing protein
Sopen07g015260.1	3.61E-04	108.5	3.2	Vacuolar Proton ATPase Subunit VHA-a isoform 2
Sopen11g021110.1	1.90E-04	129.8	3.1	Protein of unknown function, DUF593
Sopen06g009470.1	2.13E-04	0.8	3.1	Hypothetical protein

A linear discriminant function was trained on the expression values of LA1777 and LA0407, and then used to classify other accessions as UI or non-UI

pollinations (Additional file 1: Table S1) or compatible intrapopulation pollinations (Additional file 1: Table S2). For instance, an H₂O₂ transporter was upregulated over 16-fold only in incompatible interpopulation pollinations. These transporters generally pump reactive H₂O₂ into the apoplast, an acidic environment with low numbers of ROS scavengers, resulting in oxidative stress [86]. A K⁺ channel and a Ca²⁺-Binding Annexin Protein, both of which were annotated as being pollen-expressed were also upregulated in interpopulation interactions, as was a Rab-GTPase. All three of these proteins can play important roles in ROS generation and signaling. In pollen tubes, annexins may provide an important link between Ca²⁺, the membrane and the cytoskeleton [92]. Further, many annexins form Ca²⁺ channels which are vital not only for the oscillating Ca²⁺ influx associated with pollen tube tip growth, but also for facilitating ROS signaling, cell elongation and cell wall remodeling [86, 93]. Interestingly, SKOR K⁺ channels like the one identified in our analysis can also act as ROS-activated Ca²⁺ channels [93]. Small GTPases, including Rabs, increase NADP(H)-oxidase

activity in a Ca²⁺-dependent manner [59, 94], and their proper function is required for pollen tube growth [59, 61, 74, 75, 95]. In *Nicotiana*, the overexpression of both active and mutant forms of the RAB11 protein leads to the inhibition of pollen tube growth [75] suggesting that the correct balance of multiple Rabs is required for effective pollen tube growth.

In UI-competent styles, ten of the top 25 most highly upregulated genes are putatively involved in ROS generation and/or signaling, including an NADP(H)-oxidase and multiple cytochrome P450s (Table 1). We also identified two highly upregulated gene candidates in the flavonoid pathway, which could produce flavonoid compounds to act as pro- or anti-oxidants (Table 1). In our subsequent analysis using transcriptome data from additional *S. habrochaites* populations, we found that six of the nine candidate stylar genes that may be involved in interspecific UI were ROS pathway genes (Table 4). Surprisingly, only two ROS-linked genes were upregulated in interpopulation UI-competent styles, one of which encodes a DELLA-like transcription factor that

indirectly inhibits ROS accumulation and restrains cell expansion [84, 85]. In sum, these results suggest that ROS production and signaling between pollen and pistil must be held in a tight balance for pollen tubes to successfully grow through styles to reach the ovary.

The generation of ROS is linked to cell expansion, growth, cell wall cross linking and callose deposition [96], and our analysis identified genes putative involved in cell wall modification. Pollen tube walls consist of a number of polymers (callose, cellulose and pectin) that are highly cross-linked to each other; however the mechanisms by which cell wall modification is regulated remains unclear [97–99]. Studies using microarray analysis have found an upregulation of cell-wall modification genes in pollinated versus unpollinated styles [52]. However, few have specifically investigated specificity to the SI or UI response (but see Pease et al. [55]). Using electron microscopy, de Nettancourt et al. [100] found differences in callose deposition between SI and UI crosses in *S. peruvianum* wherein SI crosses showed high levels of callose deposition at the pollen tube tips, but interspecific crosses did not [100]. Our pairwise comparisons in UP versus pollinated LA1777 styles did not reveal any genes involved in cell wall modification. However, we did identify a number of differentially expressed genes involved in cell wall modification in our larger analysis of stylar tissue (Additional file 1: Table S4 and Table S5), most of which were highly downregulated in UI-competent styles.

One of the most intriguing gene candidates from our analysis of stylar tissue included a putative RALF peptide hormone (Sopen02g033850) that was upregulated over 22-fold in UI-competent styles. Peptide hormone signaling is involved in numerous processes during pollen-pistil interactions, from pollen hydration to fertilization [78]. A tomato RALF has been shown to reduce pollen tube growth during specific windows of development [67], and therefore a stylar-secreted RALF could play a role in the rejection of interspecific pollen tubes. Another interesting style-expressed candidate to pursue is the Kunitz-like Protease Inhibitor that was upregulated in UI-competent styles. The *Nicotiana* NaStep protein from this family is required for the rejection of some (but not all) interspecific pollen [68], and this protease inhibitor may play a similar role in *S. habrochaites* UI. Finally, the most highly-upregulated stylar gene identified in UI-competent styles encodes a putative prenylated heavy-metal binding protein (Additional file 2: Figure S2), that may be worthy of further investigation. Other proteins of this type have been identified in a variety of tissues, and the few that have been characterized have been implicated in stress responses [101].

In UI-competent pollen, we identified a highly upregulated putative AGP (Sopen12g014190) (Table 2) that contains multiple defining characteristics of an AGP (Additional file 2: Figure S2; [71, 102]). This protein contains a signal

peptide, a hydrophobic C-terminal domain, eight proline-containing dipeptides and is composed of >35% Pro/Ala/Ser/Thr (PAST) amino acids (Additional file 2: Figure S2). In *Arabidopsis*, pollen AGPs are required for pollen tube growth, and may be involved in complex signaling cascades [69–71], and pollen AGPs have been localized to pollen tube tips in some species [103]. Another gene that warrants further study is a Rab-GTPase (Sopen01g033860) that was upregulated nearly 200-fold in UI-competent pollen. It will be interesting to see if increasing the expression of these candidate genes in UI-compromised pollen is able to increase rates of pollen tube growth through SI styles.

Conclusions

Our analyses revealed differentially expressed genes that may contribute to reproductive incompatibility between populations of *S. habrochaites*. This work represents an important first step in understanding how unilateral barriers might arise between populations, and how they are maintained during speciation. The variability in UI responses between *S. habrochaites* populations provides an exciting opportunity to further analyze these candidate genes and link them to specific UI phenotypes.

Methods

Solanum habrochaites plant material and growth

Solanum habrochaites (S. Knapp & D. M. Spooner) is a wild relative of tomato that demonstrates variability in mating system [42, 45], as well as interspecific [31, 35] and interpopulation [1, 6–8] cross-compatibilities. Seeds from the *S. habrochaites* accessions (referred to hereafter as populations) used in this study (Table 3) were acquired from the C.M. Rick Tomato Genetic Resource Center (TGRC) at University of California, Davis (<http://tgrc.ucdavis.edu>, [104]), sterilized according to recommendations from the TGRC, grown under greenhouse conditions as previously described [1] for approximately 3 weeks, and transplanted in covered outdoor agricultural field plots at Colorado State University. All agronomic experiments were conducted in accordance with local legislation and no permitting was required. Plants used in the study were randomized within a single block, and remained large and healthy throughout the experiment. Specific populations were chosen based on reproductive characteristics as described in Broz et al., [6], see Table 3 for more information.

Pollen tube growth phenotypes

Pollen tube growth through the style was assessed for self, intrapopulation and reciprocal interpopulation crosses of *S. habrochaites* individuals, although for LA0407, self and intrapopulation crosses consistently resulted in fruit-set, so pollen tube growth was not assessed for every individual. For all crosses, buds were emasculated 1 day prior to

anthesis (day -1), hand-pollinated 24 h later (day 0, bud-break), and harvested into fixative (1:3 acetoethanol) 48 h after pollination. For crosses between LA1777 (female) and LA0407 (male), styles were harvested at various time points after pollination (12, 24 and 48 h) to determine the time at which pollen tube rejection occurred. Pollinations were typically performed in the late afternoon and collected the following morning. However, pollen tube growth through styles was similar for pollinations performed in both the morning and the afternoon (data not shown).

Pollinations were covered with mesh bags to prevent unintended pollen deposition by pollinators. Pollen tube growth was assessed using fluorescence microscopy as previously described [31], and the length of styles and the point in the style at which no more than three pollen tubes passed were measured using ImageJ 1.47v (<https://imagej.nih.gov/ij/>; [105]).

Tissue collection, RNA extraction and library construction

The primary RNA-seq experiment was performed to identify genes involved in interpopulation pollen tube rejection observed in crosses between LA1777 females and LA0407 males. Samples consisted of unpollinated styles, pollinated styles (self-pollination, intrapopulation pollination, or interpopulation pollination), and ungerminated pollen (Fig. 1; Additional file 1: Table S10) – resulting in five treatment/tissue types for each individual. Three individuals from each population were used as biological replicates, resulting in a total of 30 libraries. In a follow-up experiment designed to narrow the list of genes involved in interpopulation interactions, RNA samples from between one and three individuals were pooled at an equimolar ratio before library creation (Additional file 1: Table S10).

For all style samples, flowers were emasculated and pollinated as described above for pollen tube growth experiments and harvested 16 h post-pollination (the approximate time at which pollen tube rejection occurred in interpopulation crosses). Unpollinated controls underwent the same treatment (emasculatation at day -1), except they were left unpollinated. For each individual plant, approximately 30 styles were collected for each treatment and pooled before RNA extraction. To minimize variation due to environmental conditions, all treatments were conducted on the same days and harvested at approximately the same time of day. Styles (including stigmas) were harvested directly into RNALater (Qiagen) and stored at 4 °C for 1 week, after which styles were blotted dry and immediately frozen at -80 °C until processing. Approximately 100 mg of dry pollen was harvested from each individual plant and immediately frozen at -80 °C. Ungerminated pollen was used for RNA extraction.

Tissues were ground using the Tissue-lyser (Qiagen), RNA was extracted using the Qiagen RNeasy Plant mini-kit and brought to a final concentration of 70–200 ng/uL. A subset of RNA samples was checked for quality by agarose gel electrophoresis and visualized by ethidium bromide staining. Sample quality was further evaluated using the Agilent 2200 RNA TapeStation system before library creation. Stranded, paired-end libraries of total RNA were generated for each sample using Illumina Truseq Stranded mRNA sample preparation kits. Libraries were pooled and distributed evenly across two lanes of Illumina HiSeq™ 2000 (Illumina Inc., San Diego, CA, USA). RNA quality control, library preparation, and pooling were performed by the Indiana University Center for Genomics and Bioinformatics. The raw transcriptome data is available on the NCBI SRA database (BioProject PRJNA310635 at <https://www.ncbi.nlm.nih.gov/bioproject/310635>).

RNA-seq read processing and mapping

Prior to mapping and assembly, reads were trimmed and filtered using the SHEAR program (<http://www.github.com/jbpease/shear>; [55]). Briefly, SHEAR first uses the Scythe algorithm (<https://github.com/vsbuffalo/scythe>; [106]) to remove adapters from the 3' end, and then filters low quality reads (mean Q < 10), reads with >7 ambiguous bases (N's), reads <50 bp, and repetitive reads with mutual information score > 0.5. The program then trims reads on both ends by removing low quality bases (Q < 20), poly-A or poly-T runs of $n \geq 12$, and ambiguous bases. The appearance of AGATC at the 3' end was also removed as we presumed it was an adapter fragment. We removed both reads in a pair if either one of them failed the filters. On average, 2.9% of all reads failed to pass the filter (min 2.5%, max 3.4%). The full command and parameters used for SHEAR can be found in Additional file 2: Method S1.

We mapped RNA-seq reads to the *Solanum pennellii* reference genome using the STAR spliced aligner with default parameters [107]. The reference genome sequence and the genome annotation (Spenn v2.0) were downloaded from <https://solgenomics.net> [108]. On average across libraries, 81% of reads mapped uniquely to the reference genome. We counted reads mapped to the reference gene annotation and to unannotated putative S-locus F-box (SLF) genes [28] (a total of 48,938 genic regions) using featureCounts v1.4.5-p1 [109]. A total of 663,185,500 read pairs were counted (72% of raw reads). For genes annotated as 'hypothetical' in Spenn v2.0 [108], further sequence alignments were carried out using NCBI BLAST searches (<https://blast.ncbi.nlm.nih.gov/>; [110]).

Differential gene expression analysis

For all tests of differential expression we used linear models implemented by the *limma* package [111, 112]

and modules from the edgeR package [113] in R [114]. First, we normalized and transformed the raw reads with *voom*, a weighted transformation based on the expected relationship between expression mean and variance [112]. We computed *t*-statistics on the transformed expression values for each gene using an empirical Bayes adjustment of standard errors with the *eBayes* function [111].

We initially searched for differential expression among stylar tissues by carrying out separate pairwise comparisons. Specifically, we compared the following pairs of style treatments in LA1777: intrapopulation-pollinated (compatible) against unpollinated (UP) styles, self-pollinated (incompatible) against UP styles and interpopulation (incompatible) against UP styles.

We visualized the genome-wide patterns of expression through a PCA of the normalized mean read counts per gene (cpm reads in the library) with the *prcomp* function (implemented in R; [114]). The PCA showed that there were negligible differences at the genome-wide scale among all style treatments within a population (Fig. 3; Additional file 2: Figure S1). Because of these high consistencies in their gene expression profiles, all style treatments (UP, self-, intra- and interpopulation pollinated) within a population were considered identical in our linear models that focus on the differences between UI-competent (LA1777) and UI-compromised (LA0407) styles.

We identified genes that are differentially expressed in UI-competent tissues using a linear model with a single fixed effect (collinear with the population of origin) for pollen ($n = 6$) and styles ($n = 24$) separately. From these models, we took genes as differentially expressed if they showed large differences in expression (> 3 -fold change), with statistical significance at a false discovery rate (FDR) of 5%. Further, we considered only tissue-specific genes: we required genes to have a significant (FDR $< 5\%$) tissue effect in a general linear model $Y \sim P + T + e$ (where P is a population effect, T is a tissue effect, and e is the error term). For stylar-side factors, we included genes as differentially expressed if they were upregulated in styles with respect to pollen, and vice versa for pollen-side factors. This last filter ensured that differences in styles were unlikely to be contributed by pollen in the styles of pollinated samples.

A number of a priori pollen and pistil UI candidate genes were selected based on information from previous publications [23, 26, 28, 31, 55]. Some of the SLF genes have not yet been annotated in the *S. pennellii* genome, so we used locus numbers and sequences from Li and Chetelat [28] to find these genes in our dataset. We identified expression levels of all a priori candidates, and carried out statistical tests similar to the ones described above to determine whether they were differentially expressed.

Additional files

Additional file 1: This excel file contains all of the additional Tables (Table S1–Table S10) associated with the manuscript. Each Table is in a different tab. Table numbers and titles are listed below: **Table S1.** Genes showing differential regulation in a pairwise comparison of LA1777 self-pollinated versus unpollinated (UP) styles. **Table S2.** Genes showing differential regulation in a pairwise comparison of LA1777 intrapopulation pollinated versus unpollinated (UP) styles. **Table S3.** Genes showing differential regulation in a pairwise comparison of LA1777 interpopulation (LA0407) pollinated versus unpollinated (UP) styles. **Table S4.** All significantly upregulated genes in styles of LA1777 vs. LA0407. **Table S5.** All significantly downregulated genes in styles of LA1777 vs. LA0407. **Table S6.** Expression of patterns of a priori gene candidates in styles of LA1777 vs. LA0407. **Table S7.** All significantly upregulated genes in pollen of LA1777 vs. LA0407. **Table S8.** All significantly downregulated genes in pollen of LA1777 vs. LA0407. **Table S9.** Expression of patterns of a priori gene candidates in pollen of LA1777 vs. LA0407. **Table S10.** *Solanum habrochaites* samples used to create RNA-seq libraries. (XLSX 140 kb)

Additional file 2: This PDF contains all of the additional material (Figure S1, Figure S2 and Method S1) associated with the manuscript. Figure/Method numbers and titles are listed below. **Figure S1.** The genome-wide patterns of expression in styles from two populations of *Solanum habrochaites*. **Figure S2.** Sequence alignments of hypothetical proteins showing the highest fold-change in UI-competent vs. UI-compromised tissues. **Method S1** Full command and parameters used for SHEAR in bioinformatics analysis of *Solanum habrochaites* transcriptomes. (DOCX 52 kb)

Abbreviations

AGP: Arabinogalactan Protein; CBS: Cystathionine beta synthase; Cpm: Counts per million; CUL1: Cullin 1; CYP51G1-Sc: *Solanum chacoense* sterol 14 α -demethylase; DMS: Defective meristem silencing; HDAC: Histone Deacetylase; HT: Small asparagine-rich protein; LDA: Linear discriminant analysis; LRR: Leucine-Rich Repeat; NaStep: *Nicotiana glauca* Stigma-Expressed Protein; PAST: Proline/Alanine/Serine/Threonine; PC: Principal component; PCA: Principal components analysis; PIP: Plasm a Membrane Intrinsic Protein; RALF: Rapid Alkalinization Factor; RLK: Receptor-Like Kinase; ROS: Reactive oxygen species; SC: Self-compatible; SCF: SKP-Cullin-F-box; SI: Self-incompatible; SKOR: Shaker family potassium outward rectifying channel; SKP: S-phase Kinase-associated Protein; SLF: S-locus F-box Protein; SIPRALF: *Solanum lycopersicum* Pollen Rapid Alkalinization Factor; TGRC: C.M. Rick Tomato Genetic Resource Center; UI: Unilateral incompatibility; UP: Unpollinated

Acknowledgements

The authors thank the Charles M. Rick Tomato Genetics Resource Center for seeds, J. Pease, M. Wu, and L. Moyle for assistance with the analysis, A. Ashford for plant care and O. Todd, T. Randall, and A. Martin for help compositing microscopic images. This work was supported by grant numbers DBI-0605200 and MCB-1127059 from the Plant Genome Research Program of the National Science Foundation.

Funding

This work was supported by grant numbers DBI-0605200 and MCB-1127059 from the Plant Genome Research Program of the National Science Foundation.

Availability of data and materials

The datasets generated and analyzed during the current study are available at the NCBI SRA (National Center for Biotechnology Information, Sequence Read Archive) database, (BioProject PRJNA310635 at <https://www.ncbi.nlm.nih.gov/bioproject/310635>).

Authors' contributions

AB performed RNA extraction, analyzed and interpreted data and wrote the manuscript with editing contributions from all authors. RG performed all bioinformatics experiments and analyzed the data. AR designed and performed crossing experiments and collected tissue. YB performed crossing experiments and collected tissue. MH designed experiments, oversaw bioinformatics experiments and assisted in data analysis. PB conceived and designed experiments, collected tissue and interpreted data. All authors read and approved the manuscript.

Competing interests

The authors declare that they have no competing interests.

Consent for publication

Not applicable.

Ethics approval and consent to participate

Not applicable.

Publisher's Note

Springer Nature remains neutral with regard to jurisdictional claims in published maps and institutional affiliations.

Author details

¹Department of Biology, Colorado State University, Fort Collins, CO 80523-1878, USA. ²Department of Biology, Indiana University, Bloomington, IN 47405, USA. ³Department of Environmental Science, University of San Francisco, San Francisco, CA 94117, USA. ⁴School of Informatics and Computing, Indiana University, Bloomington, IN 47405, USA.

Received: 13 October 2016 Accepted: 12 April 2017

Published online: 24 April 2017

References

- Baek YS, Covey PA, Petersen JJ, Chetelat RT, McClure B, Bedinger PA. Testing the SI x SC rule: pollen-pistil interactions in interspecific crosses between members of the tomato clade (*Solanum* section *Lycopersicon*, Solanaceae). *Am J Bot*. 2015;102(2):302–11. doi:10.3732/ajb.1400484.
- de Nettancourt D. Incompatibility and incongruity in wild and cultivated plants. Berlin: Springer; 2001.
- Hogenboom NG. Model for incongruity in intimate partner relationships. *Euphytica*. 1973;22(2):219–33. doi:10.1007/bf00022629.
- Lewis D, Crowe LK. Unilateral interspecific incompatibility in flowering plants. *Heredity*. 1958;12:233–56.
- Martin FW. Genetic control of unilateral incompatibility between two tomato species. *Genetics*. 1967;56(3P1):391–8.
- Broz AK, Randle AM, Sianta SA, Tovar-Méndez A, McClure B, Bedinger PA. Mating system transitions in *Solanum habrochaites* impact interactions between populations and species. *New Phytol*. 2017;213:440–54. doi:10.1111/nph.14130.
- Martin FW. Distribution and interrelationships of incompatibility barriers in *Lycopersicon hirsutum* humb. and bonpl. complex. *Evolution*. 1963;17(4):519–28. doi:10.2307/2407103.
- Martin FW. Inheritance of unilateral incompatibility in *Lycopersicon hirsutum*. *Genetics*. 1964;50(3):459–69.
- Rick CM, Chetelat RT. The breakdown of self-incompatibility in *Lycopersicon hirsutum*. In: Hawkes JG, Lester RN, Nee M, Estrada N, editors. *Solanaceae III: Taxonomy, chemistry, evolution*. London: Royal Botanic Gardens Kew and Linnean Society of London; 1991. p. 253–6.
- Silva NF, Goring DR. Mechanisms of self-incompatibility in flowering plants. *Cell Mol Life Sci*. 2001;58(14):1988–2007. doi:10.1007/pl00000832.
- McClure B, Cruz-García F, Romero C. Compatibility and incompatibility in S-RNase-based systems. *Ann Bot*. 2011;108(4):647–58. doi:10.1093/aob/mcr179.
- McClure BA, Haring V, Ebert PR, Anderson MA, Simpson RJ, Sakiyama F, et al. Style self-incompatibility gene-products of *Nicotiana glauca* are ribonucleases. *Nature*. 1989;342(6252):955–7. doi:10.1038/342955a0.
- Chapman LA, Goring DR. Pollen-pistil interactions regulating successful fertilization in the Brassicaceae. *J Exp Bot*. 2010;61(7):1987–99. doi:10.1093/jxb/erq021.
- Takayama S, Isogai A. Self-incompatibility in plants. *Ann Rev Plant Biol*. 2005;56(1):467–89. doi:10.1146/annurev.arplant.56.032604.144249.
- Entani T, Kubo K-i, Isogai S, Fukao Y, Shirakawa M, Isogai A et al. Ubiquitin-proteasome-mediated degradation of S-RNase in a Solanaceous cross-compatibility reaction. *Plant J* 2014;78(6):1014–1021. doi:10.1111/tpj.12528.
- Kao TH, Tsukamoto T. The molecular and genetic bases of S-RNase-based self-incompatibility. *Plant Cell*. 2004;16(Suppl):S72–83. doi:10.1105/tpc.016154.
- Swanson R, Edlund AF, Preuss D. Species specificity in pollen-pistil interactions. *Ann Rev Gen*. 2004;38(1):793–818. doi:10.1146/annurev.genet.38.072902.092356.
- K-i K, Entani T, Takara A, Wang N, Fields AM, Hua Z, et al. Collaborative non-self recognition system in S-RNase-based self-incompatibility. *Science*. 2010;330(6005):796–9. doi:10.1126/science.1195243.
- Sijacic P, Wang X, Skirpan AL, Wang Y, Dowd PE, McCubbin AG, et al. Identification of the pollen determinant of S-RNase-mediated self-incompatibility. *Nature*. 2004;429(6989):302–5. doi:10.1038/nature02523.
- Wang N, Kao TH. Self-incompatibility in *Petunia*: a self/nonself-recognition mechanism employing S-locus F-box proteins and S-RNase to prevent inbreeding. *Wiley Interdiscip Re Dev Biol*. 2012;1(2):267–75. doi:10.1002/wdev.10.
- Williams JS, Wu L, Li S, Sun P, Kao TH. Insight into S-RNase-based self-incompatibility in *Petunia*: recent findings and future directions. *Front Plant Sci*. 2015;6:41. doi:10.3389/fpls.2015.00041.
- Hancock CN, Kent L, McClure BA. The stylar 120 kDa glycoprotein is required for S-specific pollen rejection in *Nicotiana*. *Plant J*. 2005;43(5):716–23. doi:10.1111/j.1365-313X.2005.02490.x.
- McClure B, Mou BQ, Canevascini S, Bernatzky R. A small asparagine-rich protein required for S-allele-specific pollen rejection in *Nicotiana*. *Proc Natl Acad Sci U S A*. 1999;96(23):13548–53. doi:10.1073/pnas.96.23.13548.
- O'Brien M, Kapfer C, Major G, Laurin M, Bertrand C, Kondo K, et al. Molecular analysis of the stylar-expressed *Solanum chacoense* small asparagine-rich protein family related to the HT modifier of gametophytic self-incompatibility in *Nicotiana*. *Plant J*. 2002;32(6):985–96.
- Hua Z, Kao T-h. Identification and characterization of components of a putative *Petunia* S-locus F-box-containing E3 ligase complex involved in S-RNase-based self-incompatibility. *Plant Cell*. 2006;18(10):2531–53. doi:10.1105/tpc.106.041061.
- Li W, Chetelat RT. A pollen factor linking inter- and intraspecific pollen rejection in tomato. *Science*. 2010;330(6012):1827–30. doi:10.1126/science.1197908.
- Li W, Chetelat RT. The role of a pollen-expressed Cullin1 protein in gametophytic self-incompatibility in *Solanum*. *Genetics*. 2014;196(2):439–42. doi:10.1534/genetics.113.158279.
- Li W, Chetelat RT. Unilateral incompatibility gene ui1.1 encodes an S-locus F-box protein expressed in pollen of *Solanum* species. *Proc Natl Acad Sci U S A*. 2015;112(14):4417–22. doi:10.1073/pnas.1423301112.
- Qiao H, Wang HY, Zhao L, Zhou JL, Huang J, Zhang YS, et al. The F-box protein AhSLF-5-2 physically interacts with S-RNases that may be inhibited by the ubiquitin/26S proteasome pathway of protein degradation during compatible pollination in *Antirrhinum*. *Plant Cell*. 2004;16(3):582–95. doi:10.1105/tpc.017673.
- Bernacchi D, Tanksley SD. An interspecific backcross of *Lycopersicon esculentum* x *L. hirsutum*: linkage analysis and a QTL study of sexual compatibility factors and floral traits. *Genetics*. 1997;147(2):861–77.
- Covey PA, Kondo K, Welch L, Frank E, Sianta S, Kumar A, et al. Multiple features that distinguish unilateral incongruity and self-incompatibility in the tomato clade. *Plant J*. 2010;64(3):367–78. doi:10.1111/j.1365-313X.2010.04340.x.
- Murfett J, Strabala TJ, Zurek DM, Mou BQ, Beecher B, McClure B. S-RNase and interspecific pollen rejection in the genus *Nicotiana*: multiple pollen-rejection pathways contribute to unilateral incompatibility between self-incompatible and self-compatible species. *Plant Cell*. 1996;8(6):943–58.
- Tovar-Mendez A, Kumar A, Kondo K, Ashford A, Baek YS, Welch L, et al. Restoring pistil-side self-incompatibility factors recapitulates an interspecific reproductive barrier between tomato species. *Plant J*. 2014;77(5):727–36. doi:10.1111/tpj.12424.
- Liedl BE, McCormick S, Mutschler MA. Unilateral incongruity in crosses involving *Lycopersicon pennellii* and *L. esculentum* is distinct from self-incompatibility in expression, timing and location. *Sex Plant Reprod*. 1996;9:299–308.
- Martin FW. Complex unilateral hybridization in *Lycopersicon hirsutum*. *Proc Natl Acad Sci U S A*. 1961;47(6):855–7. doi:10.1073/pnas.47.6.855.
- Hogenboom NG, Mather K. Incompatibility and incongruity: two different mechanisms for the non-functioning of intimate partner relationships. *Proc R Soc Lond B Biol Sci*. 1975;188(1092):361–75. doi:10.1098/rspb.1975.0025.
- Bedinger PA, Broz AK, Tovar-Méndez A, McClure B. Pollen-pistil interactions and their role in mate selection. *Plant Physiol*. 2017;173(1):79–90. http://dx.doi.org/10.1104/pp.16.01286.
- Bedinger PA, Chetelat RT, McClure B, Moyle LC, Rose JKC, Stack SM, et al. Interspecific reproductive barriers in the tomato clade: opportunities to decipher mechanisms of reproductive isolation. *Sex Plant Reprod*. 2011;24(3):171–87. doi:10.1007/s00497-010-0155-7.

39. Igic B, Bohs L, Kohn JR. Ancient polymorphism reveals unidirectional breeding system shifts. *Proc Natl Acad Sci U S A*. 2006;103(5):1359–63. doi:10.1073/pnas.0506283103.
40. Igic B, Kohn JR. The distribution of plant mating systems: study bias against obligately outcrossing species. *Evolution*. 2006;60(5):1098–103. doi:10.1554/05-383.1.
41. Pease JB, Haak DC, Hahn MW, ML C. Phylogenomics reveals three sources of adaptive variation during a rapid radiation. *PLoS Biol*. 2016;14(2):e1002379. doi:10.1371/journal.pbio.1002379.
42. Peralta I, Spooner M, Knapp S. Taxonomy of wild tomatoes and relatives (*Solanum* sect. *Lycopersicoides*, sect. *Juglandifolia*, sect. *Lycopersicon*). *Syst Bot Monogr*. 2008;84.
43. Rick CM. Biosystematic studies in *Lycopersicon* and closely related species of *Solanum*. In: Hawkes JG, Lester RN, Skelding AD, editors. *The biology and Taxonomy of the Solanaceae*, Symposium series no. 7: Linnean Soc; 1979.
44. Rick CM. Reproductive isolation in the *Lycopersicon peruvianum* complex. In: D'Arcy WG, editor. *Solanaceae*, biology and systematics. New York: Columbia University Press; 1986. p. 477–95.
45. Rick CM, Fobes JF, Tanksley SD. Evolution of mating systems in *Lycopersicon hirsutum* as deduced from genetic-variation in electrophoretic and morphological characters. *Plant Syst Evol*. 1979;132(4):279–98. doi:10.1007/bf00982390.
46. Kondo K, Yamamoto M, Itahashi R, Sato T, Egashira H, Hattori T, et al. Insights into the evolution of self-compatibility in *Lycopersicon* from a study of stilar factors. *Plant J*. 2002;30(2):143–53. doi:10.1046/j.1365-313X.2002.01275.x.
47. Sifres A, Blanca J, Nuez F. Pattern of genetic variability of *Solanum habrochaites* in its natural area of distribution. *Genet Resour Crop Evol*. 2011; 58(3):347–60. doi:10.1007/s10722-010-9578-0.
48. Mutschler M, Liedl B. Interspecific crossing barriers in *Lycopersicon* and their relationship to self-incompatibility. In: Williams E, editor. *Genetic control of self-incompatibility and reproductive development in flowering plants*. Netherlands: Kluwer Academic; 1994. p. 164–88.
49. Sacks EJ, St Clair DA. Variation among seven genotypes of *Lycopersicon esculentum* and 36 accessions of *L. hirsutum* for interspecific crossability. *Euphytica*. 1998;101(2):185–91. doi:10.1023/a:1018376806570.
50. Beecher B, Zurek D, McClure B. Effects of RNases on rejection of pollen from *Nicotiana tabacum* and *N. plumbaginifolia*. *Sex Plant Reprod*. 2001;14(1–2): 69–76. doi:10.1007/s004970100078.
51. Becker JD, Boavida LC, Carneiro J, Haury M, Feijó JA. Transcriptional profiling of *Arabidopsis* tissues reveals the unique characteristics of the pollen transcriptome. *Plant Physiol*. 2003;133(2):713–25. doi:10.1104/pp.103.028241.
52. Boavida LC, Borges F, Becker JD, Feijó JA. Whole genome analysis of gene expression reveals coordinated activation of signaling and metabolic pathways during pollen-pistil interactions in *Arabidopsis*. *Plant Physiol*. 2011; 155(4):2066–80. doi:10.1104/pp.110.169813.
53. Honys D, Twell D. Comparative analysis of the *Arabidopsis* pollen transcriptome. *Plant Physiol*. 2003;132(2):640–52. doi:10.1104/pp.103.020925.
54. Qin Y, Leydon AR, Manziello A, Pandey R, Mount D, Denic S, et al. Penetration of the stigma and style elicits a novel transcriptome in pollen tubes, pointing to genes critical for growth in a pistil. *PLoS Genet*. 2009;5(8): e1000621. doi:10.1371/journal.pgen.1000621.
55. Pease JB, Guerrero RF, Sherman NA, Hahn MW, Moyle LC. Molecular mechanisms of postmating prezygotic reproductive isolation uncovered by transcriptome analysis. *Mol Ecol*. 2016;25(11):2592–608. doi:10.1111/mec.13679.
56. Yoo KS, Ok SH, Jeong BC, Jung KW, Cui MH, Hyoung S, et al. Single cystathionine beta-synthase domain-containing proteins modulate development by regulating the thioredoxin system in *Arabidopsis*. *Plant Cell*. 2011;23(10):3577–94. doi:10.1105/tpc.111.089847.
57. Zhong X, Hale CJ, Law JA, Johnson LM, Feng S, Tu A, et al. DDR complex facilitates global association of RNA polymerase V to promoters and evolutionarily young transposons. *Nat Struct Mol Biol*. 2012;19(9):870–5. doi:10.1038/nsmb.2354.
58. Jimenez-Quesada MJ, Traverso JA, Alche JD. NADPH Oxidase-dependent superoxide production in plant reproductive tissues. *Front Plant Sci*. 2016;7: 359. doi:10.3389/fpls.2016.00359.
59. Nibau C, Wu HM, Cheung AY. RAC/ROP GTPases: 'hubs' for signal integration and diversification in plants. *Trends Plant Sci*. 2006;11(6):309–15. doi:10.1016/j.tplants.2006.04.003.
60. Potocky M, Jones MA, Bezvoda R, Smirnof N, Zarsky V. Reactive oxygen species produced by NADPH oxidase are involved in pollen tube growth. *New Phytol*. 2007;174(4):742–51. doi:10.1111/j.1469-8137.2007.02042.x.
61. Potocky M, Pejchar P, Gutkowska M, Jimenez-Quesada MJ, Potocka A, Alche Jde D, et al. NADPH oxidase activity in pollen tubes is affected by calcium ions, signaling phospholipids and Rac/Rop GTPases. *J Plant Physiol*. 2012; 169(16):1654–63. doi:10.1016/j.jplph.2012.05.014.
62. Steinhorst L, Kudla J. Calcium - a central regulator of pollen germination and tube growth. *Biochim Biophys Acta*. 2013;1833(7):1573–81. doi:10.1016/j.bbamcr.2012.10.009.
63. Wang C-L, Wu J, Xu G-H, Gao Y-b, Chen G, Wu J-Y et al. S-RNase disrupts tip-localized reactive oxygen species and induces nuclear DNA degradation in incompatible pollen tubes of *Pyrus pyrifolia*. *J Cell Sci* 2010;123(24):4301–4309.
64. Bosch M, Franklin-Tong VE. Self-incompatibility in *Papaver*: signalling to trigger PCR in incompatible pollen. *J Exp Bot*. 2008;59:481–90.
65. Dresselhaus T, Márton ML. Microcytoplasmic pollen tube guidance and burst: adapted from defense mechanisms? *Curr Opin Plant Biol*. 2009;12(6):773–80. http://dx.doi.org/10.1016/j.pbi.2009.09.015
66. Murphy E, De Smet I. Understanding the RALF family: a tale of many species. *Trends Plant Sci*. 2014;19(10):664–71. http://dx.doi.org/10.1016/j.tplants.2014.06.005
67. Covey PA, Subbaiah CC, Parsons RL, Pearce G, Lay FT, Anderson MA, et al. A pollen-specific RALF from tomato that regulates pollen tube elongation. *Plant Physiol*. 2010;153(2):703–15. doi:10.1104/pp.110.155457.
68. Jimenez-Duran K, McClure B, Garcia-Campusano F, Rodriguez-Sotres R, Cisneros J, Busot G, et al. NaStEP: a proteinase inhibitor essential to self-incompatibility and a positive regulator of HT-B stability in *Nicotiana glauca* pollen tubes. *Plant Physiol*. 2013;161(1):97–107. doi:10.1104/pp.112.198440.
69. Coimbra S, Costa M, Jones B, Mendes MA, Pereira LG. Pollen grain development is compromised in *Arabidopsis* agp6 agp11 null mutants. *J Exp Bot*. 2009;60(11):3133–42. doi:10.1093/jxb/erp148.
70. Pereira AM, Pereira LG, Coimbra S. Arabinogalactan proteins: rising attention from plant biologists. *Plant Reprod*. 2015;28(1):1–15. doi:10.1007/s00497-015-0254-6.
71. Ellis M, Egelund J, Schultz CJ, Bacic A. Arabinogalactan-proteins: key regulators at the cell surface? *Plant Physiol*. 2010;153:403–19.
72. Cheung AY, Wang H, Wu H-m. A floral transmitting tissue-specific glycoprotein attracts pollen tubes and stimulates their growth. *Cell*. 1995; 82(3):383–393. doi:http://dx.doi.org/10.1016/0092-8674(95)90427-1.
73. Wu H-m, Wong E, Ogdahl J, Cheung AY. A pollen tube growth-promoting arabinogalactan protein from *Nicotiana glauca* is similar to the tobacco TTS protein. *Plant J*. 2000;22(2):165–76.
74. Chen CY, Cheung AY, Wu HM. Actin-depolymerizing factor mediates Rac/Rop GTPase-regulated pollen tube growth. *Plant Cell*. 2003;15(1):237–49.
75. de Graaf BHJ, Cheung AY, Andreyeva T, Levasseur K, Kieliszewski M, Wu H-m. Rab11 GTPase-regulated membrane trafficking is crucial for tip-focused pollen tube growth in tobacco. *Plant Cell*. 2005;17(9):2564–79. doi:10.1105/tpc.105.033183.
76. Zhang Y, Zhao Z, Xue Y. Roles of proteolysis in plant self-incompatibility. *Ann Rev Plant Biol*. 2009;60:21–42. doi:10.1146/annurev.arplant.043008.092108.
77. Zhang D, Wengier D, Shuai B, Gui CP, Muschietti J, McCormick S, et al. The pollen receptor kinase LePRK2 mediates growth-promoting signals and positively regulates pollen germination and tube growth. *Plant Physiol*. 2008;148(3):1368–79. doi:10.1104/pp.108.124420.
78. Kanaoka MM, Higashiyama T. Peptide signaling in pollen tube guidance. *Curr Opin Plant Biol*. 2015;28:127–36. doi:10.1016/j.pbi.2015.10.006.
79. Takeuchi H, Higashiyama T. Tip-localized receptors control pollen tube growth and LURE sensing in *Arabidopsis*. *Nature*. 2016;531(7593):245–8. doi: 10.1038/nature17413.
80. Wang T, Liang L, Xue Y, Jia PF, Chen W, Zhang MX, et al. A receptor heteromer mediates the male perception of female attractants in plants. *Nature*. 2016;531(7593):241–4. doi:10.1038/nature16975.
81. Chen W. Expression profile matrix of *Arabidopsis* transcription factor genes suggests their putative functions in response to environmental stresses. *Plant Cell*. 2002;14(3):559–74. doi:10.1105/tpc.010410.
82. Nuruzzaman M, Sharoni AM, Kikuchi S. Roles of NAC transcription factors in the regulation of biotic and abiotic stress responses in plants. *Front Microbiol*. 2013;4:248. doi:10.3389/fmicb.2013.00248.
83. Cui Y, Ling Y, Zhou J, Li X. Interference of the histone deacetylase inhibits pollen germination and pollen tube growth in *Picea wilsonii* mast. *PLoS One*. 2015;10(12):e0145661. doi:10.1371/journal.pone.0145661.
84. Cheng H, Qin L, Lee S, Fu X, Richards DE, Cao D, et al. Gibberellin regulates *Arabidopsis* floral development via suppression of DELLA protein function. *Development*. 2004;131(5):1055–64. doi:10.1242/dev.00992.

85. Mittler R, Vandersaunders S, Suzuki N, Miller G, Tognetti VB, Vandepoele K, et al. ROS signaling: the new wave? *Trends Plant Sci.* 2011;16(6):300–9. doi:10.1016/j.tplants.2011.03.007.
86. Demidchik V. Mechanisms of oxidative stress in plants: from classical chemistry to cell biology. *Environ Exp Bot.* 2015;109:212–28. doi:10.1016/j.envexpbot.2014.06.021.
87. Lassig R, Gutermuth T, Bey TD, Konrad KR, Romeis T. Pollen tube NAD(P)H oxidases act as a speed control to dampen growth rate oscillations during polarized cell growth. *Plant J.* 2014;78(1):94–106. doi:10.1111/tpj.12452.
88. Wilkins KA, Bancroft J, Bosch M, Ings J, Smirnov N, Franklin-Tong VE. Reactive oxygen species and nitric oxide mediate actin reorganization and programmed cell death in the self-incompatibility response of *Papaver*. *Plant Physiol.* 2011;156(1):404–16. doi:10.1104/pp.110.167510.
89. Serrano I, Romero-Puertas MC, Sandalio LM, Almedilla A. The role of reactive oxygen species and nitric oxide in programmed cell death associated with self-incompatibility. *J Exp Bot.* 2015;66:2869–7.
90. Jiang X, Gao Y, Zhou H, Chen J, Wu J, Zhang S. Apoplastic calmodulin promotes self-incompatible pollen tube growth by enhancing calcium influx and reactive oxygen species concentration in *Pyrus pyrifolia*. *Plant Cell Rep.* 2014;33:255–63.
91. Carraro L, Gerola PD, Lombardo G, Gerola FM. Peroxidase activity and gametophytic incompatibility: bud-pollination in *Petunia hybrida*. *Caryologia.* 1989;42(3–4):225–34. doi:10.1080/00087114.1989.10796969.
92. Zhu J, Wu X, Yuan S, Qian D, Nan Q, An L, et al. Annexin5 plays a vital role in *Arabidopsis* pollen development via Ca²⁺-dependent membrane trafficking. *PLoS One.* 2014;9(7):e102407. doi:10.1371/journal.pone.0102407.
93. Swarbreck SM, Colaco R, Davies JM. Plant calcium-permeable channels. *Plant Physiol.* 2013;163(2):514–22. doi:10.1104/pp.113.220855.
94. Wong HL, Pinontoan R, Hayashi K, Tabata R, Yaeno T, Hasegawa K, et al. Regulation of rice NADPH Oxidase by binding of Rac GTPase to its N-terminal extension. *Plant Cell.* 2007;19(12):4022–34. doi:10.1105/tpc.107.055624.
95. Szumlanski AL, Nielsen E. The Rab GTPase RabA4d regulates pollen tube tip growth in *Arabidopsis thaliana*. *Plant Cell.* 2009;21(2):526–44. doi:10.1105/tpc.108.060277.
96. Karkonen A, Kuchitsu K. Reactive oxygen species in cell wall metabolism and development in plants. *Phytochemistry.* 2015;112:22–32. doi:10.1016/j.phytochem.2014.09.016.
97. Anderson CT. We be jammin': an update on pectin biosynthesis, trafficking and dynamics. *J Exp Bot.* 2016;67(2):495–502. doi:10.1093/jxb/erv501.
98. Chebli Y, Kaneda M, Zerkour R, Geitmann A. The cell wall of the *Arabidopsis* pollen tube—spatial distribution, recycling, and network formation of polysaccharides. *Plant Physiol.* 2012;160(4):1940–55. doi:10.1104/pp.112.199729.
99. Mollet J-C, Leroux C, Dardelle F, Lehner A. Cell wall composition, biosynthesis and remodeling during pollen tube growth. *Plants.* 2013;2(1):107–47. doi:10.3390/plants2010107.
100. De Nettancourt D, Devreux M, Laneri U. Genetical and ultrastructural aspects of self and cross incompatibility in interspecific hybrids between self-compatible *Lycopersicon esulentum* and self-incompatible *L. peruvianum*. *Theor Appl Genet.* 1974;44:278–88.
101. de Abreu-Neto JB, Turchetto-Zolet AC, de Oliveira LFF, Zanettini MHB, Margis-Pinheiro M. Heavy metal-associated isoprenylated plant protein (HIPP): characterization of a family of proteins exclusive to plants. *FEBS J.* 2013;280(7):1604–16.
102. Showalter AM, Keppler B, Lichtenberg J, Gu D, Welch L. A bioinformatics approach to the identification, classification, and analysis of hydroxyproline-rich glycoproteins. *Plant Physiol.* 2010;153:485–513.
103. Jauh GY, Lord EM. Localization of pectins and arabinogalactan-proteins in lily (*Lilium longiflorum* L.) pollen tube and style, and their possible roles in pollination. *Planta.* 1995;199:251–61.
104. UC Davis DoPS. C. M. Rick Tomato Genetics Resource Center. Davis, California. 2016. <http://tgrc.ucdavis.edu>. Accessed 16 Aug 2016.
105. Rasband WS. ImageJ. U. S. National Institutes of Health. Bethesda. 1997–2016. <http://imagej.nih.gov/ij/>.
106. Buffalo V. Scythe, a bayesian adapter trimmer. 2011–2014. <https://github.com/vsbuffalo/scythe>. 2016.
107. Dobin A, Davis CA, Schlesinger F, Drenkow J, Zaleski C, Jha S, et al. STAR: ultrafast universal RNA-seq aligner. *Bioinformatics.* 2013;29(1):15–21. doi:10.1093/bioinformatics/bts635.
108. Fernandez-Pozo N, Menda N, Edwards JD, Saha S, Teclé IY, Strickler SR, et al. The Sol Genomics Network (SGN)—from genotype to phenotype to breeding. *Nucleic Acids Res.* 2015;43:D1036–D41.
109. Liao Y, Smyth GK, Shi W. Feature counts: an efficient general purpose program for assigning sequence reads to genomic features. *Bioinformatics.* 2014;30(7):923–30. doi:10.1093/bioinformatics/btt656.
110. Information NCBI. Basic local alignment search tool. 2016. <https://blast.ncbi.nlm.nih.gov/Blast.cgi>. Accessed Oct 10 2016.
111. Law CW, Chen Y, Shi W, Smyth GK. Voom: precision weights unlock linear model analysis tools for RNA-seq read counts. *Genome Biol.* 2014;15(2):R29. doi:10.1186/gb-2014-15-2-r29.
112. Smyth GK. limma: linear models for microarray data. *Bioinformatics and computational biology solutions using R and Bioconductor*. New York: Springer; 2005. p. 397–420.
113. Robinson MD, McCarthy DJ, Smyth GK. edgeR: a Bioconductor package for differential expression analysis of digital gene expression data. *Bioinformatics.* 2010;26(1):139–40. doi:10.1093/bioinformatics/btp616.
114. R Core Team. A language and environment for statistical computing. Vienna: R Foundation for Statistical Computing; 2015.

Submit your next manuscript to BioMed Central and we will help you at every step:

- We accept pre-submission inquiries
- Our selector tool helps you to find the most relevant journal
- We provide round the clock customer support
- Convenient online submission
- Thorough peer review
- Inclusion in PubMed and all major indexing services
- Maximum visibility for your research

Submit your manuscript at
www.biomedcentral.com/submit

