

CORRECTION

Open Access



# Correction to: SNP genotyping elucidates the genetic diversity of Magna Graecia grapevine germplasm and its historical origin and dissemination

Gabriella De Lorenzis<sup>1</sup>, Francesco Mercati<sup>2</sup>, Carlo Bergamini<sup>3</sup>, Maria Francesca Cardone<sup>3</sup>, Antonio Lupini<sup>4</sup>, Antonio Mauceri<sup>4</sup>, Angelo Raffaele Caputo<sup>3</sup>, Loredana Abbate<sup>2</sup>, Maria Gabriella Barbagallo<sup>5</sup>, Donato Antonacci<sup>3</sup>, Francesco Sunseri<sup>4\*</sup> and Lucio Brancadoro<sup>1\*</sup>

**Correction to: BMC Plant Biol 19, 7 (2019)**  
<https://doi.org/10.1186/s12870-018-1576-y>

Following publication of the original article [1], the authors identified an error in Fig. 4. The correct figure is given below.

## Author details

<sup>1</sup>Dipartimento di Scienze Agrarie ed Ambientali, via Celoria 2, 20133 Milan, Italy. <sup>2</sup>Istituto di Bioscienze e Biorisorse CNR, Corso Calatafimi 414, 90120 Palermo, Italy. <sup>3</sup>Consiglio per la ricerca in agricoltura e l'analisi dell'economia agraria, Centro di ricerca Viticoltura ed Enologia, CREA-VE, via Casamassima 148, 70010 Turi, Bari, Italy. <sup>4</sup>Dipartimento AGRARIA, località Feo di Vito snc, 89121 Reggio Calabria, Italy. <sup>5</sup>Dipartimento di Scienze Agrarie, Alimentari e Forestali, viale delle Scienze 11, 90128 Palermo, Italy.

Published online: 02 July 2020

## Reference

1. De Lorenzis, et al. SNP genotyping elucidates the genetic diversity of Magna Graecia grapevine germplasm and its historical origin and dissemination. *BMC Plant Biol.* 2019;19:7 <https://doi.org/10.1186/s12870-018-1576-y>.
2. Laucou V, Launay A, Bacilieri R, Lacombe T, Adam-Blondon AF, Bérard A, Chauveau A, de Andrés MT, Hausmann L, Ibáñez J, Le Paslier MC, Maghradze D, Martínez-Zapater JM, Maul E, Ponnaiah M, Töpfer R, Péros JP, Boursiquot JM, Chiang TY. Extended diversity analysis of cultivated grapevine *Vitis vinifera* with 10K genome-wide SNPs. *Plos One*; 2018;13(2): e0192540.

The original article can be found online at <https://doi.org/10.1186/s12870-018-1576-y>.

\* Correspondence: [francesco.sunseri@unirc.it](mailto:francesco.sunseri@unirc.it); [lucio.brancadoro@unimi.it](mailto:lucio.brancadoro@unimi.it)

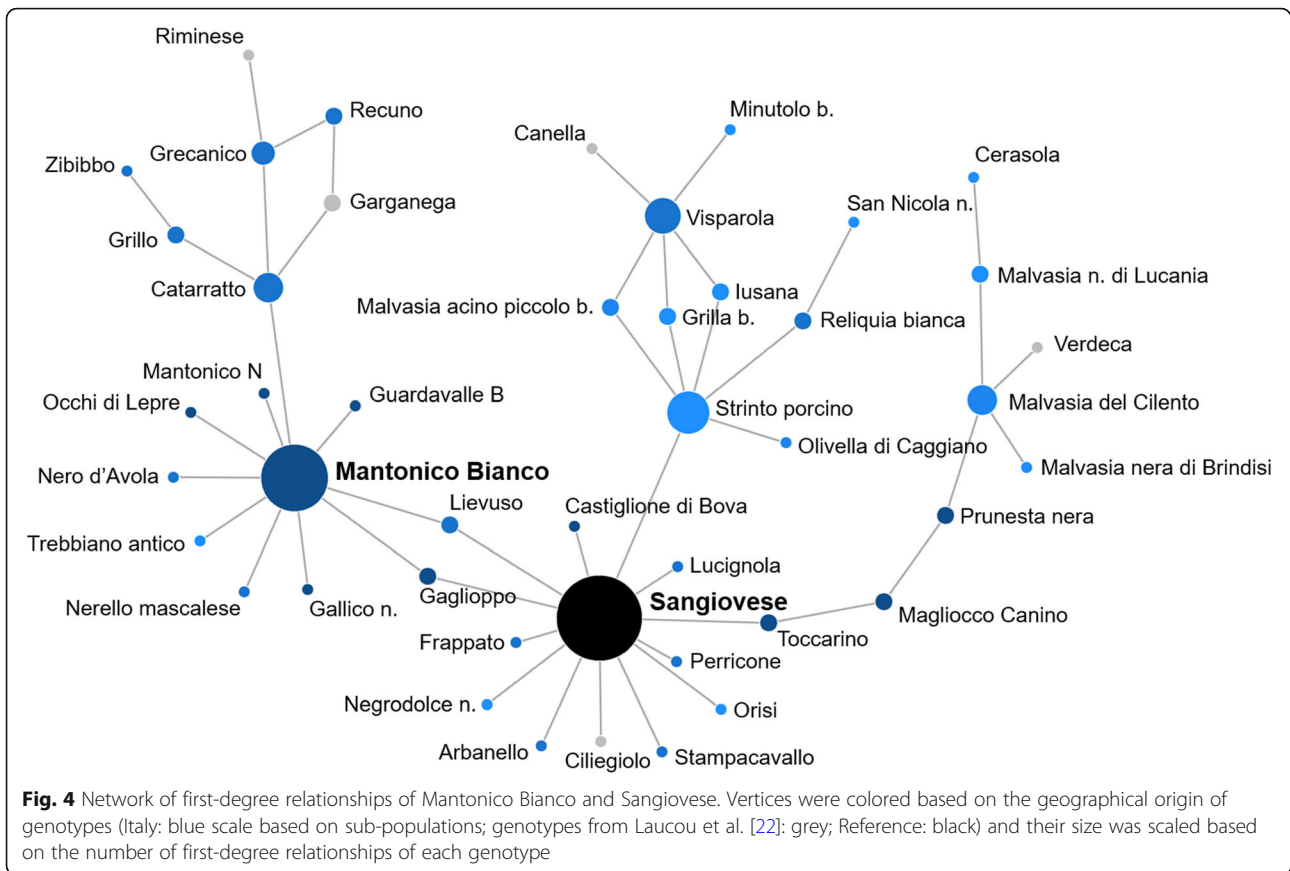
<sup>4</sup>Dipartimento AGRARIA, località Feo di Vito snc, 89121 Reggio Calabria, Italy

<sup>1</sup>Dipartimento di Scienze Agrarie ed Ambientali, via Celoria 2, 20133 Milan, Italy

Full list of author information is available at the end of the article



© The Author(s). 2020 **Open Access** This article is licensed under a Creative Commons Attribution 4.0 International License, which permits use, sharing, adaptation, distribution and reproduction in any medium or format, as long as you give appropriate credit to the original author(s) and the source, provide a link to the Creative Commons licence, and indicate if changes were made. The images or other third party material in this article are included in the article's Creative Commons licence, unless indicated otherwise in a credit line to the material. If material is not included in the article's Creative Commons licence and your intended use is not permitted by statutory regulation or exceeds the permitted use, you will need to obtain permission directly from the copyright holder. To view a copy of this licence, visit <http://creativecommons.org/licenses/by/4.0/>. The Creative Commons Public Domain Dedication waiver (<http://creativecommons.org/publicdomain/zero/1.0/>) applies to the data made available in this article, unless otherwise stated in a credit line to the data.



**Fig. 4** Network of first-degree relationships of Mantonico Bianco and Sangiovese. Vertices were colored based on the geographical origin of genotypes (Italy: blue scale based on sub-populations; genotypes from Laucou et al. [22]: grey; Reference: black) and their size was scaled based on the number of first-degree relationships of each genotype