

RESEARCH ARTICLE

Open Access



Effects of red and blue light on leaf anatomy, CO₂ assimilation and the photosynthetic electron transport capacity of sweet pepper (*Capsicum annuum* L.) seedlings

Yan Li^{1,2,3,4†}, Guofeng Xin^{1†}, Chang Liu⁵, Qinghua Shi^{1,2,3,4}, Fengjuan Yang^{1,3,4} and Min Wei^{1,2,3,4*}

Abstract

Background: The red (R) and blue (B) light wavelengths are known to influence many plant physiological processes during growth and development, particularly photosynthesis. To understand how R and B light influences plant photomorphogenesis and photosynthesis, we investigated changes in leaf anatomy, chlorophyll fluorescence and photosynthetic parameters, and ribulose-1, 5-bisphosphate carboxylase/oxygenase (Rubisco) and Calvin cycle-related enzymes expression and their activities in sweet pepper (*Capsicum annuum* L.) seedlings exposed to four light qualities: monochromatic white (W, control), R, B and mixed R and B (RB) light with the same photosynthetic photon flux density (PPFD) of 300 μmol/m²·s.

Results: The results revealed that seedlings grown under R light had lower biomass accumulation, CO₂ assimilation and photosystem II (PSII) electron transportation compared to plants grown under other treatments. These changes are probably due to inactivation of the photosystem (PS). Biomass accumulation and CO₂ assimilation were significantly enriched in B- and RB-grown plants, especially the latter treatment. Their leaves were also thicker, and photosynthetic electron transport capacity, as well as the photosynthetic rate were enhanced. The up-regulation of the expression and activities of Rubisco, fructose-1, 6-bisphosphatase (FBPase) and glyceraldehyde-phosphate dehydrogenase (GAPDH), which involved in the Calvin cycle and are probably the main enzymatic factors contributing to RuBP (ribulose-1, 5-bisphosphate) synthesis, were also increased.

Conclusions: Mixed R and B light altered plant photomorphogenesis and photosynthesis, mainly through its effects on leaf anatomy, photosynthetic electron transportation and the expression and activities of key Calvin cycle enzymes.

Keywords: Sweet pepper (*Capsicum annuum* L.), Light quality, Anatomy, Photosynthesis, CO₂ assimilation

* Correspondence: minwei@sdau.edu.cn

†Yan Li and Guofeng Xin contributed equally to this work.

¹College of Horticultural Science and Engineering, Shandong Agricultural University, Tai'an, China

²Scientific Observing and Experimental Station of Environment Controlled Agricultural Engineering in Huang-Huai-Hai Region, Ministry of Agriculture, Tai'an, China

Full list of author information is available at the end of the article



© The Author(s). 2020 **Open Access** This article is licensed under a Creative Commons Attribution 4.0 International License, which permits use, sharing, adaptation, distribution and reproduction in any medium or format, as long as you give appropriate credit to the original author(s) and the source, provide a link to the Creative Commons licence, and indicate if changes were made. The images or other third party material in this article are included in the article's Creative Commons licence, unless indicated otherwise in a credit line to the material. If material is not included in the article's Creative Commons licence and your intended use is not permitted by statutory regulation or exceeds the permitted use, you will need to obtain permission directly from the copyright holder. To view a copy of this licence, visit <http://creativecommons.org/licenses/by/4.0/>. The Creative Commons Public Domain Dedication waiver (<http://creativecommons.org/publicdomain/zero/1.0/>) applies to the data made available in this article, unless otherwise stated in a credit line to the data.

Background

Light is one of the most important environmental factors affecting plant growth and development [1]. Using light rather than chemicals to control plant architecture can reduce the environmental impacts [2]. Light affects the photosynthetic characteristics of seedlings by regulating chloroplast and anatomy development, and through its influence on key enzyme activities and the related expression of genes involved in the Calvin cycle, etc. [3–6].

Photosynthesis is the green engine that powers life on Earth, as it is the only biological process that allows plants, etc., to convert light energy into chemical energy [7]. Improving photosynthesis is critical to maintaining sufficient dry biomass accumulation. It is well known that in addition to light intensity and photoperiod, light quality, namely, light color or wavelength, exerts a significant effect on regulating plant growth and photosynthesis [8–12]. Specific light qualities have precise effects on plants. For example, blue (B) and red (R) light are the most effectively utilized wavelengths during plant photosynthesis because the absorption spectra of the photosynthetic pigments mainly focus on the B (400–500 nm) and R (600–700 nm) light spectra. Therefore, their utility and regulatory mechanisms have always been important areas of research [13, 14].

A few studies have used R and B light to examine the effects of light quality on anatomy, photosynthesis and morphology of plants. In general, R light plays an important role in controlling the functions of the chloroplast, stem and petiole growth and the reproductive system [15, 16]. B light affects plant growth, leaf expansion, photomorphogenesis, stomatal opening, photosynthesis and pigment accumulation [17, 18]. Furthermore, it is shown that plants grown under B light have higher stomatal conductance, larger chlorophyll (Chl) *a/b*, greater photosystem (PS) activity and photosynthetic electron transport ability, higher levels of ribose-1, 5-bisphosphate carboxylase/oxygenase (Rubisco) activity and expression of genes related to Calvin cycle than those plants grown under R light [19, 20].

The Calvin cycle which occurs during the process of photosynthesis consists of light-independent redox reactions which happens in the stroma of chloroplasts and exerts a key effect on photosynthetic carbon fixation. The efficiency of carbon assimilation is affected by the regeneration rate of ribulose-1, 5-bisphosphate (RuBP). Rubisco is a key enzyme in plant photosynthesis that controls both carbon dioxide and carbon fixation [21]. This set of reactions is catalyzed by Rubisco as well as other corresponding key enzymes and finally converts carbon dioxide and water into organic sugars. According to the previous researches, light quality exerts an impact on photosynthetic property by regulating the expression of these genes related [22, 23].

It has also been shown that monochromatic R or B light does not satisfy normal plant growth requirements and the absence of one of the two light qualities creates photosynthetic inefficiencies [24]. Various studies have found that mixed R and B light is an effective lighting source that improves plant development and a suitable proportion of R and B light accelerates photosynthesis and the growth of tomato, cucumber and sweet pepper, etc. [24–26]. Leaf anatomy may directly influence light capture by its leaf thickness as well as by the differentiation of palisade and spongy mesophyll. Earlier report showed that leaf thickness increased when R light was supplemented with B light [27]. Furthermore, Klein [28] and Naznin [26] found that mixed R and B light led to higher Chl *a*, *b* and total Chl levels, an improved electron transport rate (ETR) and an early onset of non-photochemical quenching (NPQ), all of which lead to increases in photosynthetic efficiency. Therefore, mixed R and B light is now used in research studies and commercial horticulture because of their effective photosynthetic wavelengths at the leaf level [29, 30]. Despite these achievements, the specific photosynthesis processes in plants affected by mixed R and B light remains largely unknown.

The popularity of sweet pepper (*Capsicum annuum* L.) for fresh market consumption or in ready-to-eat food has risen significantly during the past decades and these peppers are mostly produced in protected environments [31]. Mixed R and B light has an apparent influence on the growth and physiology of pepper plants [26, 32, 33]. Gaining a more complete mechanistic picture of how plants adapt and respond to R and B light quality is important since light quality plays important roles in growth and physiology. In addition, a better understanding of the leaf anatomy, CO₂ assimilation and photosynthetic electron transport that influence responses to R and B light can improve the photosynthetic efficiency and assist in developing better methods to evaluate plant responses to light quality. Recently, light-emitting diodes (LEDs), which are light sources that have a high photosynthetic efficiency, have been successfully used in scientific research and protected horticulture [34–36]. Our previous studies have found that a suitable proportion of mixed R and B light (light intensity of R:B = 3:1, RB) accelerated pepper seedlings' photosynthesis and growth. The objective of this study was to examine how R and/or B light sources affected pepper seedling photomorphogenesis, photosynthetic characteristics, as well as the transcriptional and translation levels of key enzymes in the Calvin cycle.

Results

Plant morphology and biomass accumulation under different light treatments

A visual overview of the influence of monochromatic and mixed R and B light on morphology of sweet pepper

seedlings at 28 day (d) after treatment (DAT) was shown in Fig. 1 and Supplementary Fig. 2 and the differences among different treatments were significant. The plant shoot dry weight (DW) under RB was significantly increased compared with W ($P < 0.05$), and it was also higher than that under other treatments, whereas, R light produced the lowest DWs (Fig. 2a). The root DWs showed similar trends under all the treatments (Fig. 2b).

Leaf anatomy under different light treatments

Table 1 and Fig. 3 showed that R and B light had a significant effect on the anatomical structure of pepper leaves. Leaf thickness was the highest under RB, followed by B and W, while the thinnest leaves were found under R light. Furthermore, compared to W, the thickness of palisade mesophyll tissue (PT), spongy mesophyll tissue (SPT) and the upper epidermis were significantly greater under RB treatment ($P < 0.05$). These three parameters increased by 26, 19 and 22%, respectively, but they were significantly reduced by R light. Thinner lower epidermal thicknesses were found under R, whereas the epidermis tended to be thicker under RB although they were not significantly different from W. The effect on the PT and SPT ratio was not strong ($P > 0.05$) and the thinnest cell layers occurred under R.

Photosynthetic light- and CO₂-response curves under different light treatments

Both of the net photosynthetic rate (Pn) of the leaves increased rapidly along with the increment in PPF (Fig. 4a) and CO₂ concentration (Fig. 4b) at the initial stage, after that, their increasing tendency gradually became stable. The highest Pn-PPFD response curve value was detected under RB, followed by B and W, whereas R produced the lowest value. Furthermore, different light treatments produced similar trends for Pn-CO₂. The apparent quantum efficiency (AQY), light saturation point

(LSP), light-saturated maximum (Pn_{max}), carboxylation efficiency (CE) and CO₂ saturation point (CSP) levels and the maximum RuBP regeneration rate were significantly higher under RB ($P < 0.05$) than those under W, whereas, the light compensation point (LCP) and CO₂ compensation point (CCP) values were decreased under this treatment (Table 2 and Table 3).

Chlorophyll a fluorescence and the chlorophyll fluorescence transients under different light treatments

The effects of R and B light on the pepper seedling Chl fluorescence parameters were shown in Fig. 5. F_v/F_m , which represents the greatest light conversion efficiency or the maximum quantum yield of PS II, was significantly higher under RB and B than that under W and there were no significant differences between RB and B treatments (Fig. 5a). Furthermore, this parameter significantly declined under R ($P < 0.05$). Φ_{PSII} represents the actual conversion efficiency of PS II or the actual quantum yield and it showed a similar reaction to the four light quality treatments (Fig. 5b). F_v'/F_m' indicates how efficiency the excitation energy is captured by open photosystem II (PSII) reaction centers and it was enhanced in RB-grown seedlings, followed by W and B, and there were no significant differences among these three treatments ($P > 0.05$) (Fig. 5c). However, seedlings grown under R light had significantly lower F_v'/F_m' values ($P < 0.05$), and no significant difference was found between R and B treatments.

The typical polyphasic Chl a fluorescence transient (OJIP) increased at different experimental time points were shown in Fig. 6a-d. In general, the results indicated that the W, B and RB treatments decreased the amplitude of the OJIP curves compared with R, mainly at the J and I step, whereas they were higher under R light. There was no obvious difference in the maximal amplitude of the O and P steps among the treatments

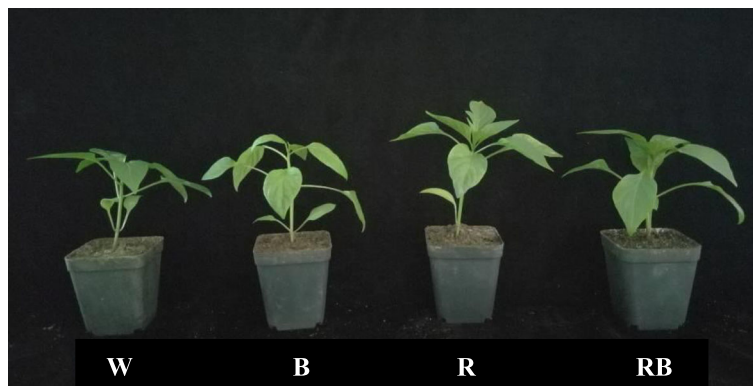
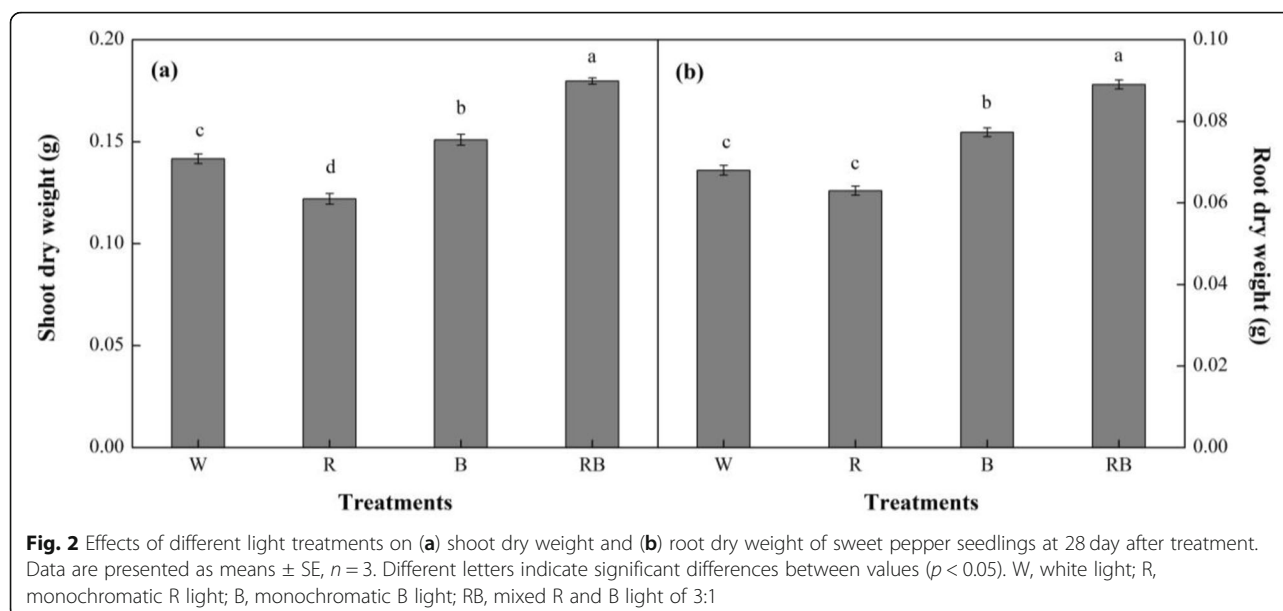


Fig. 1 Effects of different light treatments on plant morphology of sweet pepper seedlings at 28 day after treatment. W, white light; R, monochromatic R light; B, monochromatic B light; RB, mixed R and B light of 3:1



($P > 0.05$). In order to further study the mechanisms behind the observed changes, the JIP-test was used for the fluorescence induction transients (Fig. 7a-h). Most JIP-test parameters (e.g., the general electron carrier of the reaction center (S_m), the potential for energy conservation from photons absorbed by PSII to the reduction of the intersystem electron acceptors (PI_{ABS}), the potential for energy conservation from photons absorbed by PSII to the reduction of PSI end acceptors (PI_{total}), the quantum yield for reduction of end electron acceptors at the PSI acceptor side (Φ_{Ro}) and the efficiency/probability with which an electron from the intersystem electron carriers is transferred to reduce end electron acceptors at the PSI acceptor side (δ_{Ro}) were significantly elevated by B and RB compared with W ($P < 0.05$), but the R light produced relatively lower values. Additionally, the fraction of PSII Chl *a* molecules that function as reaction centers (RC/ABS), the dissipated energy in the reaction

center (DI_o/RC) and the maximum trapped energy exciton per active PSII reaction center (TR_o/RC) in the leaves under R were significantly greater than those under other treatments ($P < 0.05$).

Calvin cycle enzymes activity under different light treatments

Rubisco, FBPase, fructose-1, 6-bisphosphate aldolase (FBA), glyceraldehyde-phosphate dehydrogenase (GAPDH) and transketolase (TK) are key enzymes in the Calvin cycle. The results showed that the Rubisco activities increased initially and then decreased with the duration of different light quality treatments increased (Fig. 8a-e). Seedlings under B and RB had significantly higher Rubisco activities than W-grown seedlings ($P < 0.05$) with 65 and 36% increases, respectively, at 28 DAT (Fig. 8). In contrast, R-grown plants had a significantly lower activity levels (15% less) than W-grown plants.

Table 1 Effects of different light treatments on leaf anatomy of sweet pepper seedlings at 28 day after treatment

Treatments	Leaf thickness (μm)	Palisade mesophyll issue thickness (μm)	Spongy mesophyll issue thickness (μm)	Upper epidermis thickness (μm)	Lower epidermis thickness (μm)	Palisade mesophyll tissue/spongy mesophyll tissue ratio
W	122.54 \pm 4.92 b	39.73 \pm 2.11 b	67.92 \pm 3.02 b	8.35 \pm 0.39 b	6.21 \pm 0.11 ab	0.59 \pm 0.06 ab
R	103.25 \pm 3.78 c	30.21 \pm 1.32 c	59.03 \pm 2.82 c	6.23 \pm 0.15 c	5.88 \pm 0.19 b	0.51 \pm 0.03 b
B	130.22 \pm 3.15 b	43.33 \pm 1.87 b	73.24 \pm 1.45 b	7.96 \pm 0.27 b	6.07 \pm 0.14 b	0.59 \pm 0.02 a
RB	146.90 \pm 5.21 a	50.07 \pm 2.56 a	81.02 \pm 2.56 a	10.18 \pm 0.11 a	6.42 \pm 0.12 a	0.62 \pm 0.04 a

Data are presented as means \pm SE, $n = 3$. Different letters indicate significant differences between values ($p < 0.05$). W white light, R monochromatic R light, B monochromatic B light, RB mixed R and B light of 3:1. The same as below

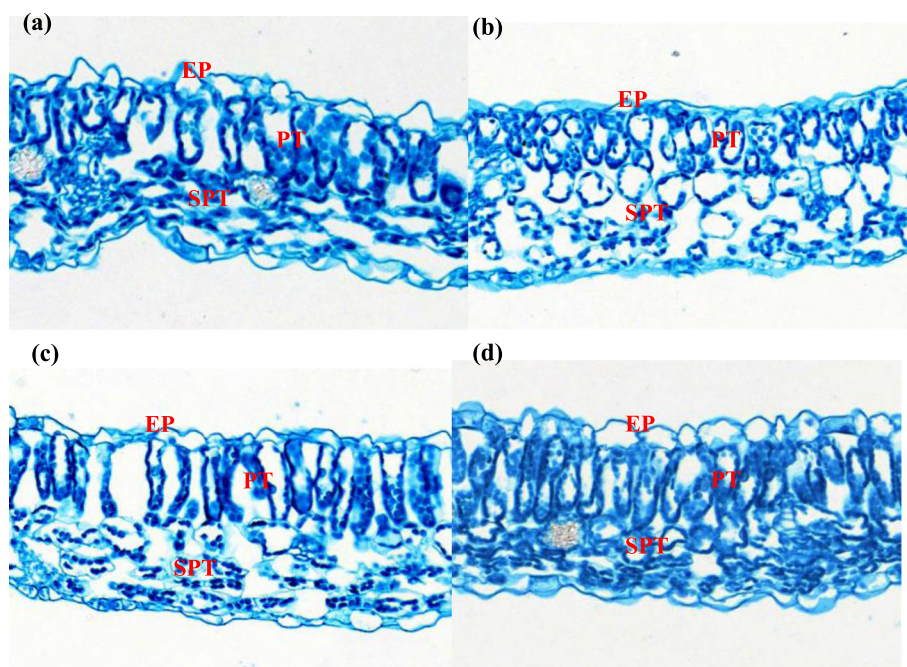


Fig. 3 Effects of different light treatments: (a) white light; (b) monochromatic R light; (c) monochromatic B light; (d) mixed R and B light of 3:1 on leaf sectioning anatomy of sweet pepper seedlings at 28 day after treatment. Images of leaf sectioning anatomy are at the same magnification. The images were taken at 200 × magnification. EP, epidermis cell; PT, palisade mesophyll tissue; SPT, spongy mesophyll tissue

Sharp increases in FBPase activity were observed in pepper seedlings under the different light treatments. The FBPase activities reached their highest levels at 21 DAT and then decreased over the following days (Fig. 8b). Activities of this enzyme in plants under B light remained significantly higher than those under other treatments from 7 to 21 DAT ($P < 0.05$), but there was no significant difference between W and B at 28

DAT ($P > 0.05$). Significantly lower activities were observed under R light than those under other treatments during the experimental period. The FBA activities in plants treated with W and R light increased slowly during the experimental period (Fig. 8c), whereas, they rapidly increased in the RB and B treatments after 14 DAT, which indicated that the enzyme activity in the RB and B treatments was greater than in the W and R

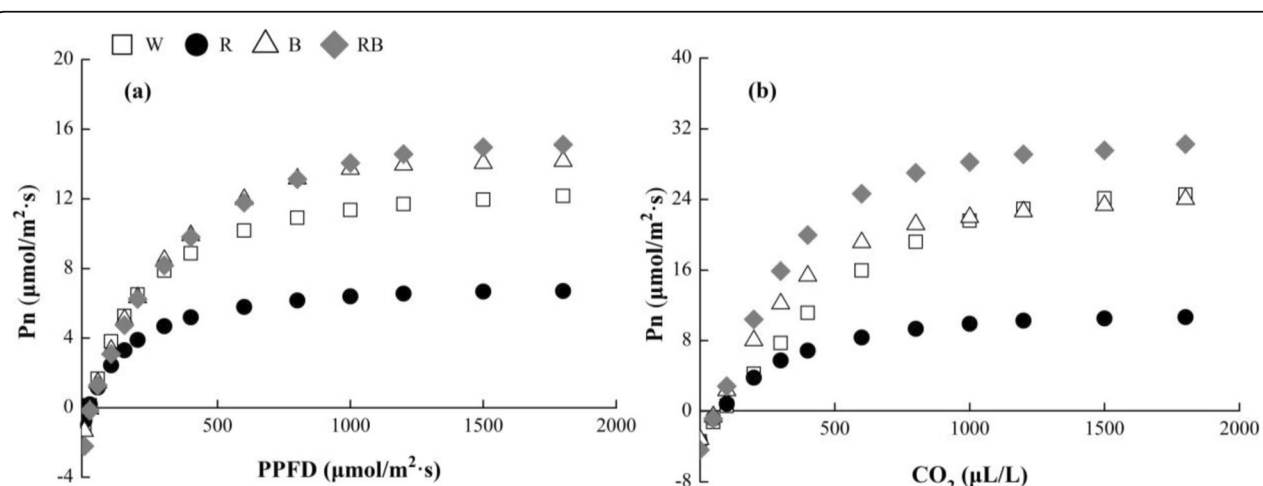


Fig. 4 Effects of different light treatments on (a) photosynthetic light- and (b) CO₂-response curves of sweet pepper seedlings at 28 day after treatment. Pn, net photosynthetic rate; PPFD, photosynthetic photon flux density; W, white light; R, monochromatic R light; B, monochromatic B light; RB, mixed R and B light of 3:1. □ W; ● R; △ B; ◆ RB

Table 2 Effects of different light treatments on photosynthetic light-response curve parameters of sweet pepper seedlings at 28 day after treatment

Treatments	AQY ($\mu\text{mol}/\text{m}^2\cdot\text{s}$)	LCP ($\mu\text{mol}/\text{m}^2\cdot\text{s}$)	LSP ($\mu\text{mol}/\text{m}^2\cdot\text{s}$)	Pn_{max} ($\mu\text{mol}/\text{m}^2\cdot\text{s}$)
W	0.051 \pm 0.003 b	26.6 \pm 2.36 a	729 \pm 38.42 c	13.0 \pm 0.23 b
R	0.030 \pm 0.002 c	27.3 \pm 2.11 a	520 \pm 29.14 d	6.1 \pm 0.45 c
B	0.050 \pm 0.002 b	23.7 \pm 1.82 b	924 \pm 27.68 b	15.2 \pm 0.62 a
RB	0.056 \pm 0.001 a	22.8 \pm 2.91 b	968 \pm 28.35 a	16.3 \pm 0.67 a

AQY apparent quantum efficiency, LCP light compensation point, LSP light saturation point, Pn_{max} light-saturated maximum

treatments. The GAPDH activities decreased in plants under all treatments, but the W and RB light applications alleviated the reduction (Fig. 8d). The TK activities were similar under all the treatments during the experimental period, except that the GAPDH and TK activities were significantly lower under the R-treatment than those under other treatments (Fig. 8e).

Gene expression under different light treatments

The RT-PCR method was used to analyze the relative expression levels of *FBA*, *FBPase*, *GAPDH* and *TK* genes involved in the Calvin cycle after pepper seedling exposure to different light qualities for 28 d. Figure 9a-d showed that the transcriptional levels of these genes varied significantly depending on the light qualities supplied and similar variation patterns were obtained for *FBA*, *FBPase* and *GAPDH* under different treatments. Generally, compared to W, seedlings under RB showed significantly increased expression levels of these three genes, whereas exposure to R light resulted in decreased gene transcription. Additionally, the relative expression level of *TK* was up-regulated in B-treated seedlings, followed by RB and W, but R produced the lowest *TK* levels.

Discussion

During the process of light-controlled growth, it is stated that photoreceptors modulate light-responsive nuclear genes by perceiving and interpreting incident light and transduce signals. In the light spectra, R and B wavelengths can strongly affect plant photosynthesis, physiological metabolism and morphology as the main spectral wavelengths [37–39]. In this study, the photomorphogenesis and photosynthetic characteristics of sweet

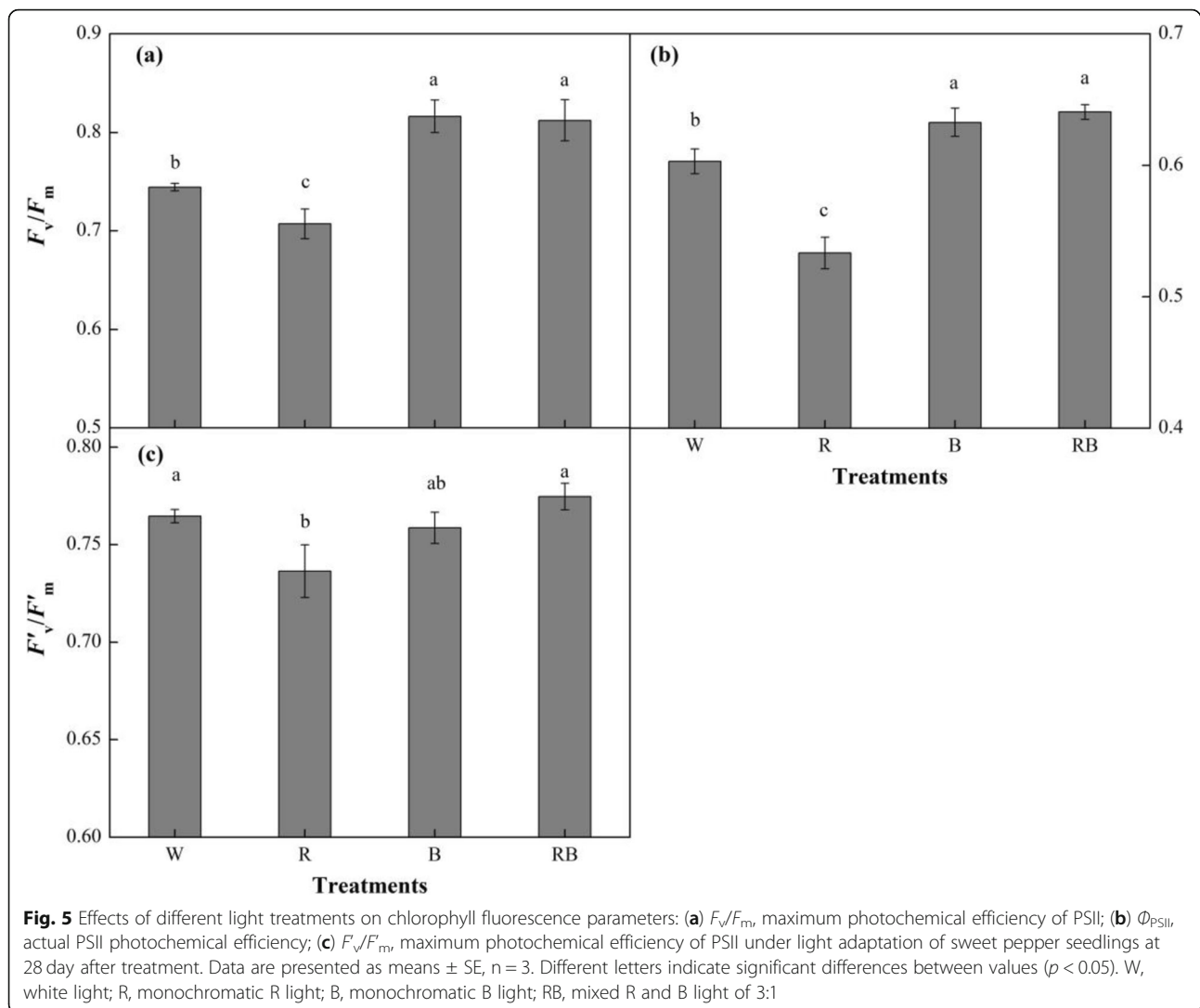
pepper seedlings were significantly influenced by the light qualities. Biomass is an important indicator of seedling quality. In this study, the seedling DW under RB was significantly greater than those under other treatments, which suggested that this spectrum was optimal because it promoted plant development and drove photosynthesis by increasing Chl *a* and total Chl contents in the seedlings [33, 40]. Previous studies also found that mixed R and B light could promote fresh weight (FW) and DW in many other plant species, such as chrysanthemum, upland cotton and tomato [41–43]. The biomass of pepper seedling was significantly increased under RB compared with other treatments and this was probably due to the enlarged leaf area (LA) [44] and changes to the leaf anatomy.

Light is absorbed by chloroplasts when it passes through the PT and SPT, which are both important photosynthetic tissues. In our study, RB treatment greatly increased the PT, SPT, as well as upper and lower epidermis thickness, which led to thicker leaves, and this was consistent with the results of Arena et al. [45] and Liu et al. [46]. The vertically elongated PT cells minimized light scattering, which allowed deeper penetration into the chloroplasts, while the changes to the SPT cells enhanced light capture by scattering the light [47]. This improved the photosynthetic structure, which should increase the light capture and absorbance capacities, and contribute to better photosynthetic light acclimation. In addition, leaf thickness plays a key role in determining space availability for chloroplast development [48]. The RB treatment increased leaf thickness, which enhanced the chloroplast ultrastructure [49]. The results suggested that a larger LA and increased leaf, as

Table 3 Effects of different light treatments on photosynthetic CO₂-response curve parameters of sweet pepper seedlings at 28 day after treatment

Treatments	CE ($\text{mol}/\text{m}^2\cdot\text{s}$)	CCP ($\mu\text{mol}/\text{m}^2\cdot\text{s}$)	CSP ($\mu\text{mol}/\text{m}^2\cdot\text{s}$)	Maximum RuBP regeneration rate ($\mu\text{mol}/\text{m}^2\cdot\text{s}$)
W	0.047 \pm 0.006 b	81 \pm 5.69 b	1087 \pm 25.38 c	23.1 \pm 3.46 b
R	0.032 \pm 0.004 c	92 \pm 3.21 a	1213 \pm 12.34 b	11.0 \pm 1.14 c
B	0.057 \pm 0.009 b	57 \pm 3.00 c	1040 \pm 17.56 d	21.4 \pm 1.96 b
RB	0.066 \pm 0.003 a	61 \pm 6.66 c	1443 \pm 21.39 a	39.5 \pm 1.06 a

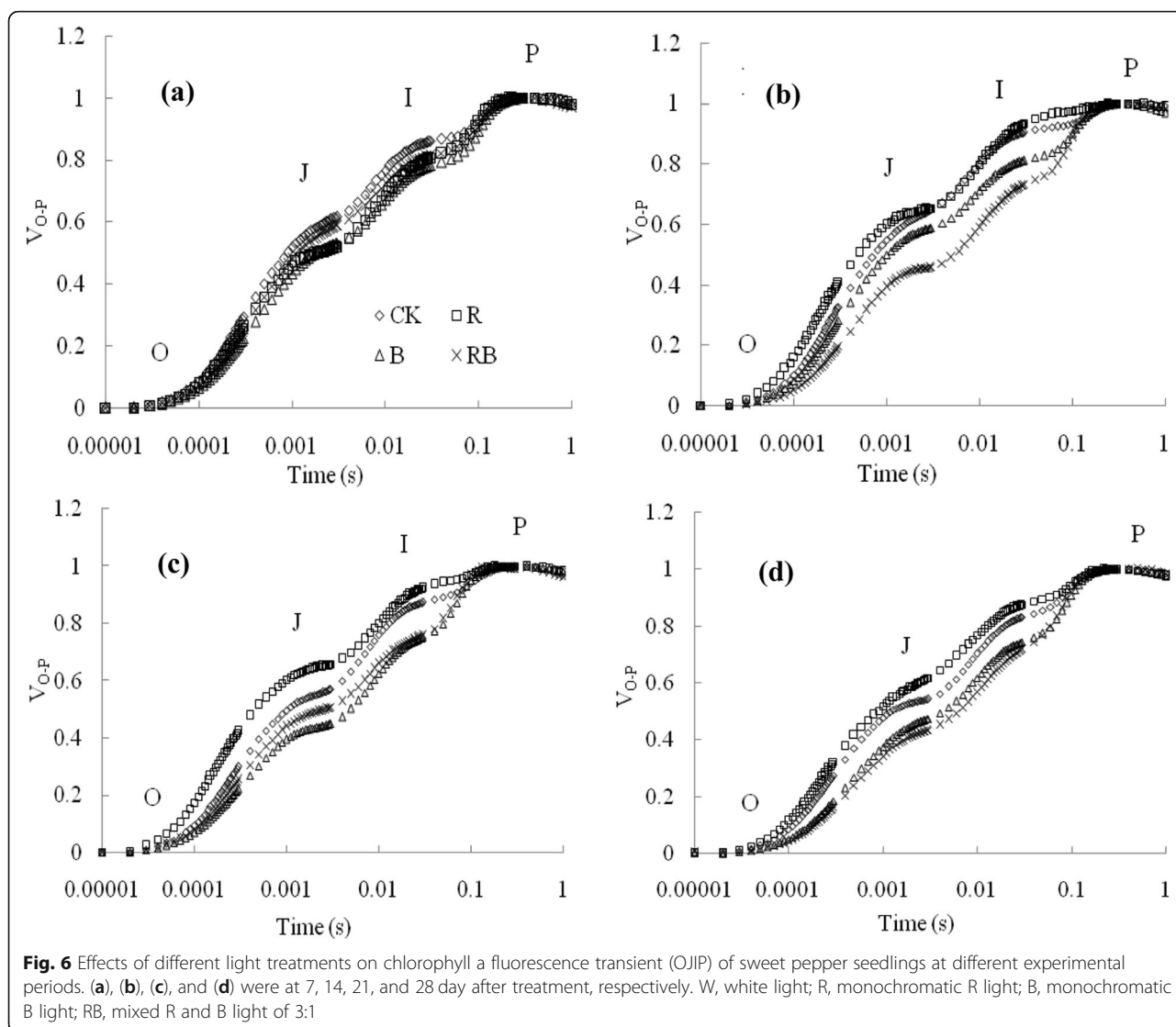
CE carboxylation efficiency, CCP CO₂ compensation point, CSP CO₂ saturation point



well as PT and SPT cells thickness improved light interception by the pepper seedlings, and this could be another important reason why RB was able to improve photosynthetic efficiency. Furthermore, the thinner leaves recorded under R light can be explained as a reaction to radiation stress on plant development and metabolic processes, as suggested by Macedo et al. [50].

The ability to do well out of the increments in optical energy and CO_2 of plants is reflected by the light- and CO_2 -response curves, which provides interesting opinions on the mechanisms based on light capture and CO_2 fixation. In this study, Pn -PPFD under the different light qualities was significantly lower than Pn - CO_2 . This might be due to a CO_2 concentration limitation. The AQY and CE values showed the initial slopes of the light- and CO_2 -response curves, respectively. They stand for the ability to obtain low levels of light energy and CO_2 of plants. Our results confirmed a previous study [51], which showed that mixed R and B light promoted

AQY and CE, and that these increases led to a rise in Pn_{max} and maximized the RuBP regeneration rate. The RB light led to significant increases in AQY, CE, Pn_{max} and the maximum RuBP regeneration rate. This indicates that mixed R and B light exerts a synergistic effect on increasing photosynthetic capacity [52]. The LSP values, which reflect the plant ability to use the highest light intensity level, were also significantly higher under RB. This showed that RB improved the ability of the leaves to utilize mixed light qualities. Furthermore, the LCP and CCP values were significantly decreased under RB, which showed that this treatment improved photosynthetic performance and light energy utilization efficiency. These results indicated that the energy conversion of mixed R and B light into chemical energy by the leaves was very efficient, as this fraction of visible light had, by far, the highest quantum yield for CO_2 fixation compared with other light treatments [53].



Light qualities can regulate photosynthesis by affecting the formation of different types of chloroplast proteins and electron transport between light systems [54]. Chl fluorescence can partly reflect the photosynthetic ability of plants [55] and the efficiency of PSII photochemistry (Φ_{PSII}) can be used to reveal the physiological state of plants [56]. Our results showed that there was a reduction in Φ_{PSII} in pepper seedlings after exposure to the RB treatment. F_v/F_m represents the maximal efficiency of the excitation energy captured by the PSII reaction centers and the significantly higher value observed in RB-treated seedlings indicated that resistance to photoinhibition was up-regulated under this treatment [57]. Additionally, the higher F_v/F_m and Φ_{PSII} levels under RB treatment showed that mixed R and B light increased the openness and electron transport efficiency of PSII, which

meant that more electrons could be absorbed, captured and transported.

There is a correlation relationship between the J-step, I-step and IP phases of Chl fluorescence transients and the redox states of quinone electron acceptor (Q_A), plastoquinone and the end acceptors at the side of PSI electron acceptor [58, 59]. The finding that R-treated leaves increased the J- and I-step suggested that electron transport at both the donor and acceptor sides of PSII was inhibited. Therefore, CO_2 assimilation was decreased by the imbalance of excitation energy distribution between PSI and PSII. Monochromatic B and mixed R and B light induced a decrease in all the OJIP steps during the experimental period compared with other treatments, which altered both the donor and acceptor sides of PSII and affected electron transport [60]. These changes maintained electron transportation on both the donor

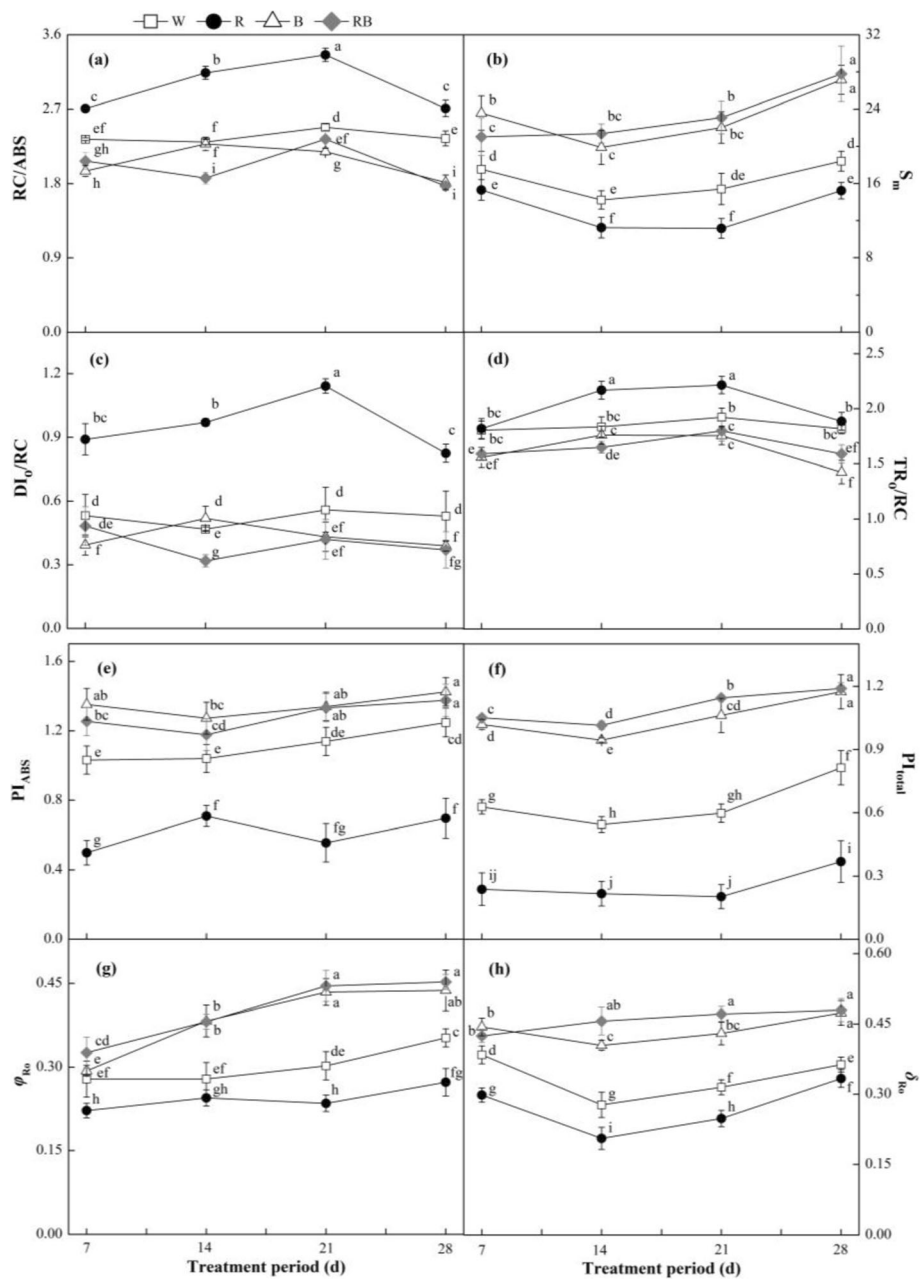


Fig. 7 Effects of different light treatments on JIP-test parameters: **(a)** RC/ABS, fraction of PSII Chl a molecules that function as reaction centers; **(b)** S_m , general electronic carrier of the reaction center; **(c)** DI_o/RC , dissipated energy in the reaction center; **(d)** TR_o/RC , maximum trapped energy exciton per active PSII reaction center; **(e)** PI_{ABS} , potential for energy conservation from photons absorbed by PSII to the reduction of the intersystem electron acceptors; **(f)** PI_{total} , potential for energy conservation from photons absorbed by PSII to the reduction of PSI end acceptors; **(g)** Φ_{Ro} , quantum yield for reduction of end electron acceptors at the PSI acceptor side; **(h)** δ_{Ro} , efficiency/probability with which an electron from the intersystem electron carriers is transferred to reduce end electron acceptors at the PSI acceptor side of sweet pepper seedlings at different experimental periods. Data are presented as means \pm SE, $n = 3$. Different letters indicate significant differences between values ($p < 0.05$). W, white light; R, monochromatic R light; B, monochromatic B light; RB, mixed R and B light of 3:1. \square W; \bullet R; \triangle B; \blacklozenge RB

and acceptor sides. Furthermore, we found that RB increased S_m , PI_{ABS} , PI_{total} , Φ_{Ro} and δ_{Ro} , but decreased RC/ABS, DI_o/RC and TR_o/RC (Fig. 7), which less damaged the photochemical and non-photochemical redox

reactions, enhanced the ability of electron transport and sped up ATP synthesis and RuBP regeneration [61]. In C3 plants, the Calvin cycle is the predominant pathway for CO_2 assimilation [62]. Rubisco is a

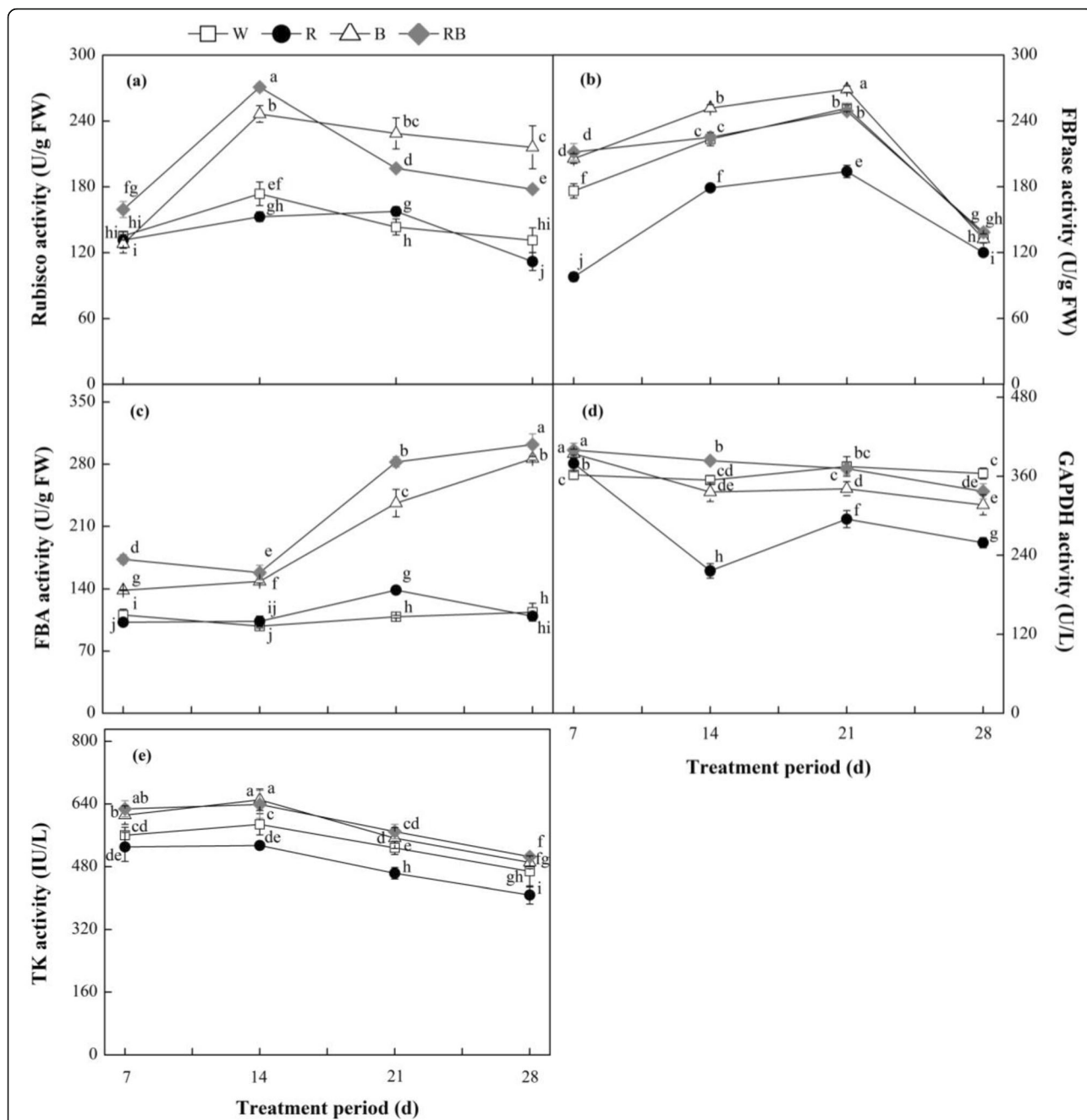
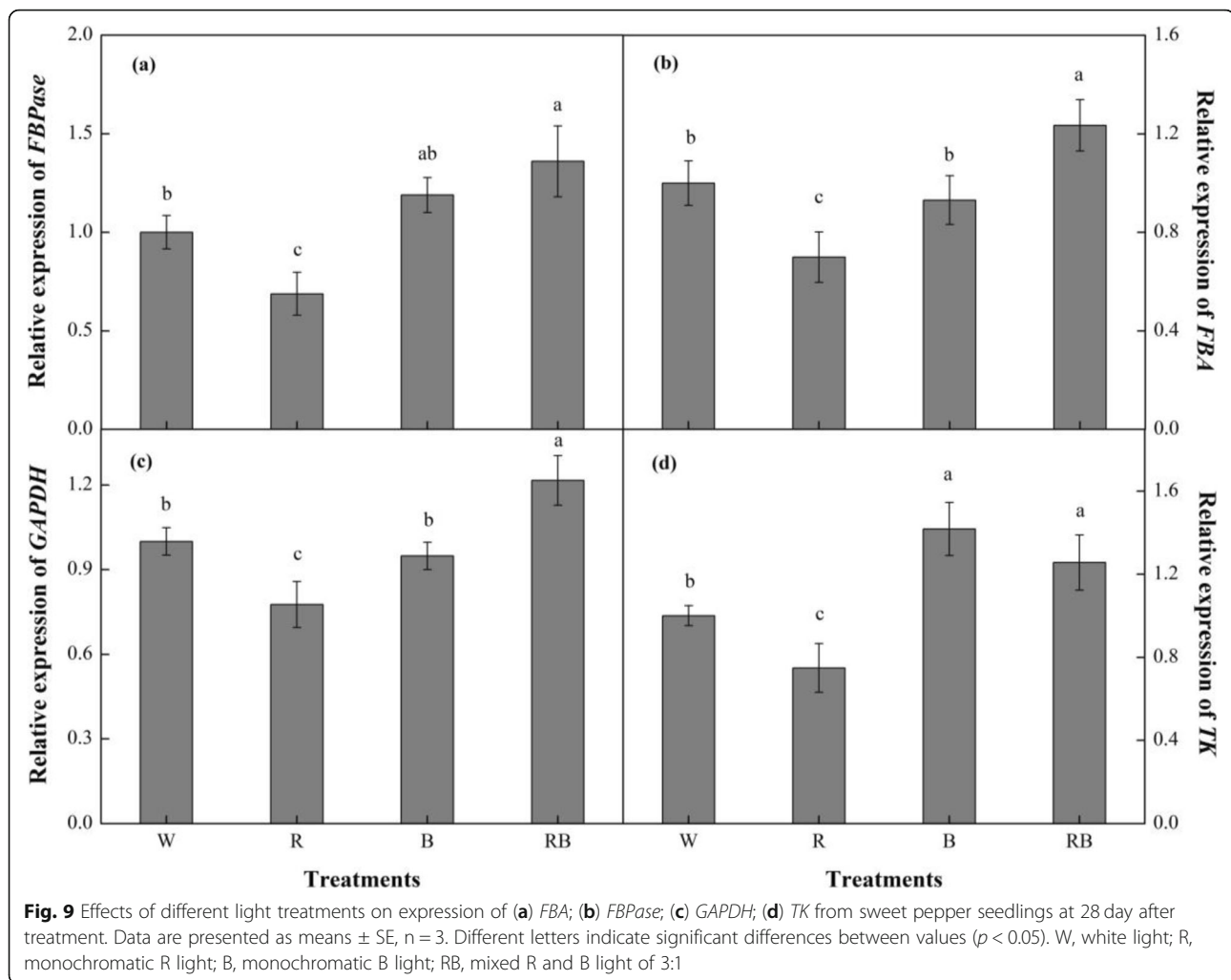


Fig. 8 Effects of different light treatments on activities of Calvin cycle-related enzymes: **(a)** Rubisco, ribulose-1, 5-bisphosphate carboxylase/oxygenase; **(b)** FBPase, fructose-1, 6-bisphosphatase; **(c)** FBA, fructose-1, 6-bisphosphate aldolase; **(d)** GAPDH, glyceraldehyde-phosphate dehydrogenase; **(e)** TK, transketolase from sweet pepper seedlings at different experimental periods. Data are presented as means \pm SE, $n = 3$. Different letters indicate significant differences between values ($p < 0.05$). FW, fresh weight; W, white light; R, monochromatic R light; B, monochromatic B light; RB, mixed R and B light of 3:1. \square W; \bullet R; \triangle B; \blacklozenge RB

representative and unique enzyme in the Calvin cycle and other Calvin cycle enzymes, including FBPase, FBA, GAPDH and TK, play an important part in modulating this pathway [63, 64]. As a significant environmental signal, light provokes gene expression and regulates related enzyme activities during the growth of plants. How light adjusts the expressions and activities of enzymes in

photosynthesis was examined by several researches [52, 65]. These previous studies were verified by the present study. The Rubisco activity in B- and RB-treated plants was significantly higher than those in the plants treated with other light wavelengths. This finding suggested that the application of B or RB could increase carbon assimilation and RuBP regeneration in the Calvin cycle. It was



also found that under R light, photosynthetic rate has decreased as the number of Rubisco activities and the transcriptional levels of most genes in the Calvin cycle reduced. This result was consistent with an earlier observation and implied that the inhibition of CO_2 carboxylation in the Calvin cycle and PSII slow down as a result of the impaired activity of Rubisco activase, which removes inhibitors bound to Rubisco, are probably responsible for the decreased CO_2 assimilation rate in R-grown seedlings compared with other light treatments [36, 66]. Furthermore, according to a previous research, the stomatal factor regulating the availability of RuBP differentially, and CO_2 may participate in adjusting gene expression because there is a high correlation between the expression levels of the genes examined and the changes in stomatal conductance [36].

The *FBA* and *FBpase* activities directly affect photosynthetic efficiency and carbon accumulation [67]. Furthermore, a previous study showed that a significantly decrease in *TK* activity led to a significant reduction in RuBP regeneration and significantly inhibited the plant

photosynthetic rate [68]. In our study, the activities of these enzymes under B and RB and the relative expression of their associated genes, except for *FBA* and *TK*, were significantly elevated, which promoted RuBP regeneration and increased Pn [67, 68]. Chloroplast *GAPDH* is a key enzyme involved in the carbon reduction process during photosynthesis [69] and the greater *GAPDH* expression level under RB light in the present study may be due to the increased demand for carbon flux [70], suggesting that maintenance of active *GAPDH* expression in the carbon reduction process could be an important factor contributing to superior photosynthesis under RB light [71]. Changes in activities of *FBA* and *TK* as well as their expression under all treatments were not positively correlated, suggesting that transcript abundance is poorly linked to de novo protein synthesis due to profound regulation at the level of translation Oelze et al. [72]. Moreover, the different patterns of gene expression and activity are probably correlated with regulatory factors other than light quality, but this needs further investigation.

Conclusions

Light quality is an important environmental factor that regulates the plant photomorphogenesis and photosynthetic characteristics. In conclusion, sweet pepper growth, development and photosynthesis are precisely controlled and genetically regulated by light quality. The results indicated that photosynthesis in seedlings under R light was inhibited by the decreased photosynthetic electron transport capacity, which caused a reduction in CO₂ assimilation. This led to down-regulation of Calvin cycle associated gene expressions and their related enzymatic activities. However, the use of monochromatic B and mixed R and B light, especially the latter, could enhance the activity of the PSII reaction center and improve photosynthesis and the expression and activities of Calvin cycle-related enzymes, including Rubisco, FBPase and GAPDH, which are probably the main enzymatic factors contributing to RuBP synthesis. Therefore, mixed R and B light may provide more suitable light conditions for the growth of sweet pepper seedlings.

Methods

Plant material and climate conditions

The experiment was performed from June to October, 2016 in a Chinese solar greenhouse (CSG) and an artificial climate chamber (ACC, Zhejiang Qiushi Environment Co., Zhejiang, China) at the Horticultural Research Center, Shandong Agricultural University, P. R. China. After immersing sweet pepper (*Capsicum annuum* L. cv. Hongqijian) seeds (Jinan Weili Seeds Co., Ltd., Shandong, China) in water for 15 min at the temperature of 55 °C and soaking it in cold water (4 °C) for 24 h. The seeds were sown into 50-cell plug trays (54.0 × 30.0 × 4.4 cm) filled with a mixture of peat (Floragard Seed 2, Floragard Co., Oldenburg, Germany) and vermiculite (2:1, v/v) in the CSG. All seedlings were watered daily with half-strength Yamazaki's pepper nutrient solution. Three weeks later, when their second true leaf had fully expanded, the seedlings were transplanted into plastic pots (8 cm long, 8 cm wide and 10 cm deep, one seedling per pot) containing the same substrate and watered with full-strength nutrient solution. Then, 480 seedlings in total were chosen, transferred into the ACC and cultured while receiving four kinds of light quality treatments for 28 d. Each light treatment was repeated three times in the same ACC and there were 40 plants for per replication per treatment. Five plants were randomly sampled at 7, 14, 21 and 28 DAT from each replication each treatment and were subjected to morphological and biochemical analyses. There was ventilation in the controlled environment, so the CO₂ level was the same as the CO₂ level of atmosphere outside. The relative humidity (RH) was kept at 70 ± 10%, with a 12 h

photoperiod and a temperature of 26 ± 1 °C during the daytime and 18 ± 1 °C at night.

Light treatments

All the mixed LEDs had a uniform spectrum for R and B light and were designed by Chunying Optoelectronics Technology Co., Ltd., Guangdong, China. The cultivation rack in the ACC was a steel frame structure with an LED light source placed at the top. The different treatments were insulated from one another by silver shading material. The plants were grown under the following light conditions: monochromatic B light with a maximum intensity at 457 nm, R light or mixed R and B light (3:1, RB: 75% R light with a wavelength of 657 nm and 25% B light with a wavelength of 457 nm) has a maximum intensity at 657 nm. There was a multi-wavelength W light treatment as control (Supplementary Fig. 1). The light intensity, expressed as PPFD at the canopy level, was set at 300 μmol/m²·s, which was measured using a quantum sensor (LI-250, LI-COR Inc., Lincoln, NE, USA) and maintained by adjusting the distance of the LEDs from the canopies. The LEDs was approximately 10 cm far away from the canopy. A spectroradiometer (Unispec-SC Spectral Analysis System, PP Systems Inc., Haverhill, MA, USA) was used to measure the spectral photon flux density distributions (SPDs) of the LEDs.

Biomass analysis

Five seedlings, including leaves and roots, were removed from each replication each treatment at 28 DAT and dried in an oven at 105 °C for 30 min. The oven temperature was changed to 75 °C and the plants were dried to a constant weight. Then, the DWs of leaves and roots were measured using an electronic balance (precision: ± 0.1 g, Model LA16001S, Sartorius Co., Hamburg, Germany).

Leaf anatomy

Leaf anatomy was measured on the fully expanded second leaves from five pepper seedlings at a similar position for each replication each treatment [46] on 28 DAT. Leaf segments of 5 mm × 5 mm were taken from the central leaf blade next to the main vein, fixed with formalin-acetic acid-alcohol (FAA) fixative, dehydrated in an alcohol and xylene series, embedded in paraffin, cross-sectioned to a thickness of 10 μm, and stained with red-solid green. The total thickness of the whole leaf and the thickness of the upper epidermis, lower epidermis, PT and SPT were measured under a transmission light microscope (DP71, Olympus Inc., Tokyo, Japan). Images were collected using a digital camera (Camedia C4040, Olympus Inc., Tokyo, Japan) and analyzed by AnalySIS 5.0 (Olympus Inc., Tokyo, Japan).

Photosynthetic light- and CO₂-response curves

Between 09:00 am and 14:00 pm, the measurement of photosynthetic light-response curves and CO₂-response curves was made on the second leaf fully-unfolded using a portable photosynthesis systems machine (LI-6400XT, Li-COR, Lincoln, NE, USA) at 28 DAT. The measurement technique was based on a modified method described by Pan et al. [52]. In the leaf chambers, the temperature was 26 ± 1 °C, air relative humidity was $65 \pm 5\%$ and the flow rate was 300 $\mu\text{mol/s}$. The measurement of light-response curves was made under different graded PPFD series of 1800, 1500, 1200, 1000, 800, 600, 400, 300, 200, 150, 100, 50, 20 and 0 $\mu\text{mol/m}^2\text{-s}$. When the CO₂-response curve measurements were taken, the light intensity and CO₂ concentration of the leaf cuvette were set to 1000 $\mu\text{mol/m}^2\text{-s}$ and 400 $\mu\text{mol/mol}$, respectively, for 30 min. After reaching a steady state, the curves of CO₂ response were measured by a CO₂ mixer under a graded Ci value series of 400, 300, 200, 100, 50, 100, 200, 300, 400, 600, 800, 1000, 1200, 1500 and 1800 $\mu\text{mol}\cdot\text{CO}_2/\text{mol}$. The leaf chamber spends 120 to 180 s in adjusting its new microclimate each time. According to a previous report, three times of measurement were made for each curve, which was suitable for a non-linear regression equation [73, 74], so that the LCP, LSP, $P_{n_{\max}}$, CCP, CSP and the maximum RuBP regeneration rate. The starting slope of the curve of light response was the AQY, and the starting slope of the curve of CO₂ response was the CE.

Chlorophyll fluorescence and chlorophyll fluorescence transients

The Chl fluorescence measurements were performed using a portable pulse modulation fluorometer (FMS-II, Hansatech Instruments Ltd., King's Lynn, Norfolk, UK). The second fully expanded leaves of five seedlings from each replication each treatment were dark adapted for 20 min, and the F_o (original fluorescence yield) and F_m (maximum fluorescence yield) were determined. Then, the leaves were put under natural light for 1 h, and the measurements of F_o , F_m and F_s values was made under the activating light of 800 $\mu\text{mol/m}^2\text{-s}$. With the saturation pulse intensity of 3000 $\mu\text{mol/m}^2\text{-s}$ and the duration of 0.8 s, F_o and F_m respectively stand for the minimum and maximum fluorescence yields of an illuminated leaf, which were measured by applying the method of saturation pulse. F_s means the steady fluorescence yield. The maximum photochemical efficiency of PSII was calculated using $F_v/F_m = (F_m - F_o) / F_m$, actual PSII photochemical efficiency was calculated using $(\Phi_{\text{PSII}}) = (F_m - F_s) / F_m$ and maximum photochemical efficiency of PSII under light adaptation was calculated using $(F_v'/F_m) = (F_m - F_o) / F_m$.

A plant efficiency analyzer (Handy PEA, Hansatech Instruments Ltd., King's Lynn, Norfolk, UK) was used to measure the OJIP on the second leaves. Strasser's method was employed to calculate the JIP-test formulae and glossary of terms [75, 76]. The following derivative parameters were determined according to Lin et al. [61] and Miao et al. [30]: RC/ABS, S_m , DI_o/RC , TR_o/RC , PI_{ABS} , PI_{total} , Φ_{Ro} and δ_{Ro} .

Calvin cycle enzymes activity

After being sampled at 7, 14, 21 and 28 DAT, the second leaves selected from top 15 plants of each treatment were used to determine the enzyme activities. Leaf tissue (0.5 g) was homogenized in 4 mL of ice-cold extraction buffer: (25 mM Hepes (K⁺), pH 7.5, 10 mM MgSO₄, 5 mM dithiothreitol (DTT), 1 mM Na₂EDTA, 1 mM phenylmethanesulfonyl fluoride (PMSF), 5% (w/v) insoluble polyvinylpyrrolidone (PVP) and 0.05% (v/v) Triton X-100). The homogenate was filtered through muslin cloth and centrifuged at 14,000×g for 5 min at 4 °C. The supernatant was used as the enzyme extract for the enzyme activity assays [77].

An ELISA kit (Shanghai Yanji Biological Technology Ltd., Shanghai, China) was employed to determine the Rubisco (EC 4.1.1.39), FBPase (EC 3.13.11), FBA (EC 4.1.2.13), GAPDH (EC 1.2.1.12) and TK (EC 2.2.1.1) activities, and the extraction approach for these enzymes were modified based on Rao and Terry [78] and Wang et al. [36]. After grounding the frozen leaf samples (0.5 g) to fine powder in a liquid nitrogen with a mortar and pestle, the powder was put into a centrifuge tube and extracted to the precool extraction buffer (5 mL). The centrifugation of enzyme extraction solution was made at 12,000×g for 15 min at the temperature of 4 °C. The activity assay of Calvin cycle enzymes used the supernatant. Afterwards, a microplate absorbance reader (Bio-Tek ELX800, Bio-Tek Instruments, Winooski, VT, USA) was used to determine the activities of the Calvin cycle enzymes under an absorbance of 450 nm based on the instructions of the manufacturer.

The measurement of the protein concentration of each enzyme extraction solution was made based on Bradford [79]. The results of the measurement were showed as U/g of protein.

Gene expression

Quick RNA Isolation Kit was used to extract total RNA according to the supplier's instructions (Huayueyang Biotech Co., Ltd., Beijing, China). A ReverTra Ace qPCR RT-Kit (Toyobo Bio-Technology, Co., Ltd., Osaka, Japan) was applied to make reverse transcription. Real-time PCR was employed to conduct the gene expression analysis with 18S rRNA as an internal control. The thermal cycler procedure was cycled once for 2 min at the

temperature of 94 °C and cycled for 40 times at the temperature of 94 °C for 10 s, 60 °C for 20 s and 72 °C for 30 s. The method described in Livak and Schmittgen was used to analyze relative gene expressions [80]. The specific gene primers used for real-time PCR analysis of the genes involved in the PS complexes are shown in Supplementary Table 1.

Data analysis

The experiment had a totally random design. Values presented are the mean \pm standard deviation (SD) of three replicates. One-way variance analysis (ANOVA) was employed to analyze the data, and the differences between the means were tested by Duncan's multiple range test ($P < 0.05$). The charts were created using Origin (version 8.5, Microcal Software Inc., Northampton, MA, USA).

Supplementary information

Supplementary information accompanies this paper at <https://doi.org/10.1186/s12870-020-02523-z>.

Additional file 1.

Abbreviations

R: Red; B: Blue; W: White; RB: Mixed red and blue light; PPFD: Photosynthetic photon flux density; Chl: Chlorophyll; ETR: Electron transport rate; NPQ: Non-photochemical quenching; LED: Light-emitting diode; LA: Leaf area; CSG: Chinese solar greenhouse; ACC: Artificial climate chamber; D: Day; DAT: Day after treatment; RH: Relative humidity; SPD: Spectral photon flux density distribution; DW: Dry weight; FAA: Formalin-acetic acid-alcohol; EP: Epidermis cell; PT: Palisade mesophyll tissue; SPT: Spongy mesophyll tissue; Pn: Net photosynthetic rate; LCP: Light compensation point; LSP: Light saturation point; Pn_{max}: Light-saturated maximum; CCP: CO₂ compensation point; CSP: CO₂ saturation point; AQY: Apparent quantum efficiency; CE: Carboxylation efficiency; F_v/F_m: Maximum photochemical efficiency of PSII; Φ_{PSII} : Actual PSII photochemical efficiency; F_v'/F_m: Maximum photochemical efficiency of PSII under light adaptation; OJIP: Chl *a* fluorescence transient; RC/ABS: Fraction of PSII Chl *a* molecules that function as reaction centers; S_m: General electronic carrier of the reaction center; D₀/RC: Dissipated energy in the reaction center; TR₀/RC: Maximum trapped energy exciton per active PSII reaction center; P_{1ABS}: Potential for energy conservation from photons absorbed by PSII to the reduction of the intersystem electron acceptors; P_{1total}: Potential for energy conservation from photons absorbed by PSII to the reduction of PSI end acceptors; Φ_{RO} : Quantum yield for reduction of end electron acceptors at the PSI acceptor side; δ_{RO} : Efficiency/probability with which an electron from the intersystem electron carriers is transferred to reduce end electron acceptors at the PSI acceptor side; RuBP: Ribulose-1, 5-bisphosphate; Rubisco: Ribulose-1, 5-bisphosphate carboxylase/oxygenase; FBPase: Fructose-1, 6-bisphosphatase; FBA: Fructose-1, 6-bisphosphate aldolase; GAPDH: Glyceraldehyde-phosphate dehydrogenase; TK: Transketolase; DTT: Dithiothreitol; PMSF: Phenylmethanesulfonyl fluoride; PVP: Polyvinylpyrrolidone

Acknowledgements

We acknowledge all the members of the research team for their assistance in the field and laboratory work. We thank International Science Editing (<http://www.internationalscienceediting.com>) for editing this manuscript.

Authors' contributions

WM conceived and designed research. XGF conducted experiments and analyzed data. LY analyzed data and wrote the manuscript. LC, SQH and YFJ modified the paper. All authors have read and approved the manuscript.

Funding

This work was supported by China Agriculture Research System (CARS-23-C04), the National Natural Science Foundation of China (31401921), the National Science Foundation of Shandong Province (ZR2014-CQ029), Science and Technology Innovation Team of Shandong Agriculture University-Facility Horticulture Advantages Team (SYL2017YSTD07) and the National Key Research and Development Program (2016YFB0302403). The funding bodies were not involved in the design of the study, collection, analysis and interpretation of data, and in writing the manuscript.

Availability of data and materials

All data generated or analyzed during this study are included in this published article and its supplementary information files.

Ethics approval and consent to participate

Not applicable.

Consent for publication

Not applicable.

Competing interests

The authors declare that they have no competing interests.

Author details

¹College of Horticultural Science and Engineering, Shandong Agricultural University, Tai'an, China. ²Scientific Observing and Experimental Station of Environment Controlled Agricultural Engineering in Huang-Huai-Hai Region, Ministry of Agriculture, Tai'an, China. ³Shandong Collaborative Innovation Center of Fruit & Vegetable Quality and Efficient Production, Tai'an, China. ⁴State Key Laboratory of Crop Biology, Tai'an 271018, China. ⁵Entomology and Nematology Department, University of Florida, 1881 Natural Area Dr, Gainesville, FL, USA.

Received: 10 December 2019 Accepted: 25 June 2020

Published online: 06 July 2020

References

- Kopsell DA, Kopsell DE. Genetic and environmental factors affecting plant lutein/zeaxanthin. *Agro Food Industry Hi-Tech*. 2008;19(2):44–6.
- Abidi F, Girault T, Douillet O, Guillemain G, Sintès G, Laffaire M, Ben-Ahmed H, Smiti S, Huché-Théliier L, Leduc N. Blue light effects on rose photosynthesis and photomorphogenesis. *Plant Biol*. 2013;15(1):67–74.
- Liu XY, Jiao XL, Chang TT, Guo SR, Xu ZG. Photosynthesis and leaf development of cherry tomato seedlings under different LED-based blue and red photon flux ratios. *Photosynthetica*. 2018;56(4):1212–7.
- Kreslavski VD, Shirshikova GN, Lyubimov VY, Shmarev N, Boutanaev AM, Kosobryukhov AA, Schmitt FJ, Friedrich T, Allakhverdiy SI. Effect of preillumination with red light on photosynthetic parameters and oxidant –/antioxidant balance in *Arabidopsis thaliana* response to UV-A. *J Photochem Photobiol B*. 2013;127(5):229–36.
- Gutu A, Nesbit AD, Alverson AJ, Palmer JD, Kehoe DM. Unique role for translation initiation factor 3 in the light color regulation of photosynthetic gene expression. *Proc Natl Acad Sci U S A*. 2013;110(40):16253–8.
- Albrecht-Borth V, Kauss D, Fan D, Hu Y, Collinge D, Marri S, Liebers M, Apel K, Pfannschmidt T, Chow WS, Pogson BJ. A novel proteinase, SNOWY COTYLEDON4, is required for photosynthetic acclimation to higher light intensities in *Arabidopsis*. *Plant Physiol*. 2013;163(2):732–45.
- Rabinowitch E, Govindjee P. Wiley, New York, 1969.
- Neff MM, Fankhauser C, Chory J. Light: an indicator of time and place. *Genes Dev*. 2000;14(3):257–71.
- Yamazaki J. Is light quality involved in the regulation of the photosynthetic apparatus in attached rice leaves? *Photosynth Res*. 2000;105(1):63–71.
- Jing X, Gong B, Wang H, Wei M, Shi QH, Liu SQ, Ai XZ, Li Y. Secondary and sucrose metabolism regulated by different light quality combinations involved in melon tolerance to powdery mildew. *Plant Physiol Biochem*. 2018;124:77–87.
- Kami C, Lorrain S, Hornitschek P, Fankhauser C. Light-regulated plant growth and development. *Curr Top Dev Biol*. 2010;91:29–66.
- Sasidharan R, Chinnappa CC, Staal M, Elzenga JTM, Yokoyama R, Nishitani K, Voeselek LACJ, Pierik R. Light quality-mediated petiole elongation in *Arabidopsis* during shade avoidance involves cell wall

- modification by xyloglucan endotransglucosylase/hydrolases. *Plant Physiol.* 2010;154(2):978–90.
13. Wang J, Lu W, Tong XY, Yang QC. Leaf morphology, photosynthetic performance, chlorophyll fluorescence, stomatal development of lettuce (*Lactuca sativa* L.) exposed to different ratios of red light to blue light. *Front Plant Sci.* 2016;250(7):1–10.
 14. Yang Z, He W, Mou S, Wang X, Chen D, Hu X, Chen L, Bai J. Plant growth and development of pepper seedlings under different photoperiods and photon flux ratios of red and blue LEDs. *Trans Chin Soc Agric Eng.* 2017;33(17):173–80.
 15. Li H, Tang C, Xu Z, Liu X, Han X. Effects of different light sources on the growth of non-heading Chinese cabbage (*Brassica campestris* L.). *J Agric Sci.* 2012;4(4):262–73.
 16. Rehman M, Ullah S, Bao Y, Wang B, Peng D, Liu L. Light-emitting diodes: whether an efficient source of light for indoor plants? *Environ Sci Pollut Res Int.* 2017;24(32):24743–52.
 17. Johkan M, Shoji K, Goto F, Hashida S, Yoshihara T. Blue light-emitting diode light irradiation of seedlings improves seedling quality and growth after transplanting in red leaf lettuce. *HortSci.* 2010;45(12):1809–14.
 18. Savvides A, Fanourakis D, van Ieperen W. Co-ordination of hydraulic and stomatal conductances across light qualities in cucumber leaves. *J Exp Bot.* 2012;63(3):1135–43.
 19. Muneer S, Kim EJ, Park JS, Lee JH. Influence of green, red and blue light emitting diodes on multiprotein complex proteins and photosynthetic activity under different light intensities in lettuce leaves (*Lactuca sativa* L.). *Int J Mol Sci.* 2014;15(3):4657–70.
 20. Yang X, Xu H, Shao L, Wang R, Li T, Wang Y. Response of photosynthetic capacity of tomato leaves to different LED light wavelength. *Environ Exp Bot.* 2018;150:161–71.
 21. Sheth B, Thaker V. In silico analyses of RuBisCO enzymes from different classes of algae. *Int J Biol Sci.* 2014;3:11–7.
 22. Kim DG, Lee C, Park SM, Choi YE. Manipulation of light wavelength at appropriate growth stage to enhance biomass productivity and fatty acid methyl ester yield using *Chlorella vulgaris*. *Bioresour Technol.* 2014;159:240–8.
 23. Lawson T, Bryant B, Lefebvre S, Lloyd JC, Raines CA. Decreased SBPase activity alters growth and development in transgenic tobacco plants. *Plant Cell Environ.* 2006;29:48–58.
 24. Hogewoning SW, Trouwborst G, Maljaars H, Poorter H, Ieperen WW, Harbinson J. Blue light dose-responses of leaf photosynthesis, morphology, and chemical composition of *Cucumis sativus* grown under different combinations of red and blue light. *J Exp Bot.* 2010;61(11):3107–17.
 25. Li Y, Xin GF, Wei M, Shi QH, Yang FJ, Wang XF. Carbohydrate accumulation and sucrose metabolism responses in tomato seedling leaves when subjected to different light qualities. *Sci Hortic.* 2017;225:490–7.
 26. Naznin MT, Lefsrud M, Gravel V, Azad MOK. Blue light added with red LEDs enhance growth characteristics, pigments content, and antioxidant capacity in lettuce, spinach, kale, basil, and sweet pepper in a controlled environment. *Plants (Basel).* 2019;8(4):93.
 27. Schuerger AC, Brown CS, Stryjewski EC. Anatomical features of pepper plants (*Capsicum annuum* L.) grown under red light-emitting diodes supplemented with blue or far-red light. *Ann Bot.* 1997;79:273–82.
 28. Klein S, Fiebig A, Noga G, Hunsche M. Influence of light quality on leaf physiology of sweet pepper plants grown under drought. *Theor Exp Plant Phys.* 2018;30(4):287–96.
 29. Fan XX, Xu ZG, Liu XY, Tang CM, Wang LW, Han XL. Effects of light intensity on the growth and leaf development of young tomato plants grown under a combination of red and blue light. *Sci Hortic.* 2013;153:50–5.
 30. Miao Y, Wang X, Gao L, Chen Q, Qu M. Blue light is more essential than red light for maintaining the activities of photosystem II and I and photosynthetic electron transport capacity in cucumber leaves. *J Integr Agr.* 2016;15(1):87–100.
 31. Jovicich E, VanSickle JJ, Cantliffe DJ, Stoffella PJ. Greenhouse-grown colored peppers: a profitable alternative for vegetable production in Florida? *HortTechnology.* 2005;15(2):355–69.
 32. Massa G, Graham T, Haire T, Flemming C, Newsham G, Wheeler R. Light emitting diode light transmission through leaf tissue of seven different crops. *HortSci.* 2015;50(3):501–6.
 33. Tang ZQ, Yu JH, Xie JM, Lyu JF, Dawuda M, Liao WB, Wu Y, Hu LL. Physiological and growth response of pepper (*Capsicum annuum* L.) seedlings to supplementary red/blue light revealed through transcriptomic analysis. *Agronomy.* 2019;9:139.
 34. Liu H, Fu Y, Hu D, Yu J, Liu H. Effect of green, yellow and purple radiation on biomass, photosynthesis, morphology and soluble sugar content of leafy lettuce via spectral wavebands “knock out”. *Sci Hortic.* 2018;236:10–7.
 35. Matsuda R, Yamano T, Murakami K, Fujiwara K. Effects of spectral distribution and photosynthetic photon flux density for overnight LED light irradiation on tomato seedling growth and leaf injury. *Sci Hortic.* 2016;198:363–9.
 36. Wang H, Gu M, Cui JX, Shi K, Zhou YH, Yu J. Effects of light quality on CO₂ assimilation, chlorophyll-fluorescence quenching, expression of Calvin cycle genes and carbohydrate accumulation in *Cucumis sativus*. *J Photochem Photobiol B Biol.* 2009;96(1):30–7.
 37. Ma LG, Li JM, Qu LJ, Janet H, Chen ZL, Zhao HY, Deng XW. Light control of arabidopsis development entails coordinated regulation of genome expression and cellular pathways. *Plant Cell.* 2001;13(12):2589–607.
 38. Wu Q, Su NN, Shen WB, Cui J. Analyzing photosynthetic activity and growth of *Solanum lycopersicum* seedlings exposed to different light qualities. *Acta Physiol Plant.* 2014;36(6):1411–20.
 39. Ooi A, Wong A, Ng TK, Marondedze C, Gehring C, Ooi BS. Growth and development of *Arabidopsis thaliana* under single-wavelength red and blue laser light. *Sci Rep.* 2016;6(1):33885.
 40. Gao S, Liu X, Liu Y, Cao B, Chen Z, Xu K. Photosynthetic characteristics and chloroplast ultrastructure of welsch onion (*Allium fistulosum* L.) grown under different LED wavelengths. *BMC Plant Biol.* 2020;20:78.
 41. Kim HH, Goins GD, Wheeler RM, Sager JC. Stomatal conductance of lettuce grown under or exposed to different light qualities. *Ann Bot.* 2004;94(5):691–7.
 42. Li H, Xu Z, Tang C. Effect of light emitting diodes on growth and morphogenesis of upland cotton (*Gossypium hirsutum* L.) plantlets in vitro. *Plant Cell Tissue Organ Cult.* 2010;103(2):155–63.
 43. Liu M, Xu Z, Yang Y, Feng Y. Effects of different spectral lights on *Oncidium* PLBs induction, proliferation, and plant regeneration. *Plant Cell Tissue Organ Cult.* 2011;106(1):1–10.
 44. Wang LW, Li Y, Xin GF, Wei M, Mi QH, Yang QC. Effects of different proportions of red and blue light on the growth and photosynthesis of tomato seedlings. *Chin J Appl Ecol.* 2017;28(5):1595–602 (In Chinese).
 45. Arena C, Tsonev T, Doneva D, De Micco V, Michelozzi M, Brunetti C, Centritto M, Fineschi S, Velikova V, Loreto F. The effect of light quality on growth, photosynthesis, leaf anatomy and volatile isoprenoids of a monoterpenemitting herbaceous species (*Solanum lycopersicum* L.) and an isoprene-emitting tree (*Platanus orientalis* L.). *Environ Exp Bot.* 2016;130:122–32.
 46. Liu XY, Guo SR, Xu ZG, Jiao XL. Regulation of chloroplast ultrastructure, cross-section anatomy of leaves, and morphology of stomata of cherry tomato by different light irradiations of light-emitting diodes. *HortScience.* 2011;46(2):217–21.
 47. Evans JR. Leaf anatomy enables more equal access to light and CO₂ between chloroplasts. *New Phytol.* 1999;143(1):93–104.
 48. Oguchi R, Hikosaka K, Hirose T. Does the photosynthetic light-acclimation need change in leaf anatomy? *Plant Cell Environ.* 2003; 26(4):505–12.
 49. Miao Y, Hou L, Chen Q, Qu M, Gao L. Blue light alleviates ‘red light syndrome’ by regulating chloroplast ultrastructure, photosynthetic traits and nutrient accumulation in cucumber plants. *Sci Hortic.* 2019;257.
 50. Macedo AF, Leal-Costa MV, Tavares ES, Lage CLS, Esquibel MA. The effect of light quality on leaf production and development of *in vitro*-cultured plants of *Alternanthera brasiliana* Kuntze. *Environ Exp Bot.* 2011;70:43–50.
 51. Li C, Chang S, Khalil-Ur-Rehman M, Xu Z, Tao J. Effect of irradiating the leaf abaxial surface with supplemental light-emitting diode lights on grape photosynthesis. *Aust J Grape Wine R.* 2017;23(1):58–65.
 52. Pan T, Wang Y, Wang L, Ding J, Cao Y, Qin G, Yan L, Xi L, Zhang J, Zou Z. Increased CO₂ and light intensity regulate growth and leaf gas exchange in tomato. *Physiol Plant.* 2020;168:694–708.
 53. Sytar O, Zivcak M, Neugart S, Toutounchi PM, Brestic M. Precultivation of young seedlings under different color shades modifies the accumulation of phenolic compounds in *Cichorium* leaves in later growth phases. *Environ Exp Bot.* 2019;165:30–8.
 54. Shin KS, Murthy HN, Heo JW, Hahn EJ, Paek KY. The effect of light quality on the growth and development of *in vitro* cultured *Doritaenopsis* plants. *Acta Physiol Plant.* 2008;30(3):339–43.
 55. Maxwell K, Johnson GN. Chlorophyll fluorescence—a practical guide. *J Exp Bot.* 2000;51(345):659–68.
 56. Kumar KS, Dahms HU, Lee JS, Kim HC, Lee WC, Shin KH. Algal photosynthetic responses to toxic metals and herbicides assessed by chlorophyll a fluorescence. *Ecotoxicol Environ Saf.* 2014;104:51–71.
 57. Kalaji HM, Schansker G, Brestic M, Bussotti F, Calatayud A, Ferroni L, Goltsev V, Guidi L, Jajoo A, Li P, Losciale P, Mishra VK, Misra AN, Nebauer SG, Pancaldi S, Penella C, Pollastrini M, Suresh K, Tambussi E, Yannicari M, Zivcak M, Cetner MD, Samborska IA, Stirbet A, Olsovska K, Kunderlikova K,

- Shelonzek H, Rusinowski S, Bąba W. Frequently asked questions about chlorophyll fluorescence, the sequel. *Photosynth Res.* 2017;132(1):13–66.
58. Lazar D. The polyphasic chlorophyll a fluorescence rise measured under high intensity of exciting light. *Funct Plant Biol.* 2006;33(1):9–30.
 59. Schansker G, Tóth SZ, Strasser RZ. Methylviologen and dibromothymoquinone treatments of pea leaves reveal the role of photosystem I in the Chl a fluorescence rise OJIP. *Biochim Biophys.* 2005;1706(3):250–61.
 60. Ben Hamed S, Lefi E, Chaieb M. Effect of phosphorus concentration on the photochemical stability of PSII and CO₂ assimilation in *pistacia vera* L. and *pistacia atlantica* desf. *Plant Physiol Bioch.* 2019;142:283–91.
 61. Lin Z, Zhong Q, Chen C, Ruan Q, Chen Z, You X. Carbon dioxide assimilation and photosynthetic electron transport of tea leaves under nitrogen deficiency. *Bot Stud.* 2016;57(1):1–12.
 62. Michelet L, Zaffagnini M, Morisse S, Sparla F, Francia F, Danon A, Marchand CH, Fermani S, Trost P, Lemaire SD. Redox regulation of the Calvin-Benson cycle: something old, something new. *Front Plant Sci.* 2013;4:470.
 63. Kono T, Mehrotra S, Endo C, Kizu N, Matusda M, Kimura H, Mizohata E, Inoue T, Hasunuma T, Yokota A. A RuBisCO-mediated carbon metabolic pathway in methanogenic archaea. *Nat Commun.* 2017;8:14007.
 64. Santos BMD, Balbuena TS. Carbon assimilation in *Eucalyptus Urophylla* grown under high atmospheric CO₂ concentrations: a proteomics perspective. *J Proteome.* 2017;150:252–7.
 65. Tyagi AK, Tripti G. Light regulation of nuclear photosynthetic genes in higher plants. *Crit Rev Plant Sci.* 2003;22(5):417–52.
 66. Parry MAJ, Delgado E, Vadell J, Keys AJ, Lawlor DW, Medrano H. Water stress and the diurnal activity of ribulose-1,5-bisphosphate carboxylase in field-grown *Nicotiana tabacum* genotypes selected for survival at low CO₂ concentrations. *Plant Physiol Biochem.* 1993;31:113–20.
 67. Raines CA. The Calvin cycle revisited. *Photosynthesis Res.* 2003;75(1):1–10.
 68. Henkes S, Sonnewald U, Badur R, Flachmann R, Stitt M. A small decrease of plastid transketolase activity in antisense tobacco transformants has dramatic effects on photosynthesis and phenylpropanoid metabolism. *Plant Cell.* 2001;13(3):535–51.
 69. Chernyad'ev II. Effect of water stress on the photosynthetic apparatus of plants and the protective role of cytokinins: a review. *Appl Biochem Micro.* 2005;41(2):133–47.
 70. Ingram J, Bartels D. The molecular basis of dehydration tolerance in plants. *Ann Rev Plant Physiol Plant Mol Biol.* 1996;47:377–403.
 71. Hu L, Liao W, Dawuda MM, Yu J, Lv J. Appropriate NH₄⁺: NO₃⁻ ratio improves low light tolerance of mini Chinese cabbage seedlings. *BMC Plant Biol.* 2017;17:22.
 72. Oelze ML, Muthuramalingam M, Vogel MO, Dietz KJ. The link between transcript regulation and de novo protein synthesis in the retrograde high light acclimation response of *Arabidopsis thaliana*. *BMC Genomics.* 2014;15:1.
 73. Farquhar GD, Caemmerer SV, Berry JA. A biochemical model of photosynthetic CO₂ assimilation in leaves of C3 species. *Planta.* 1980;149(1):78–90.
 74. Dubois JJ, Fiscus EL, Booker FL, Flowers MD, Reid CD. Optimizing the statistical estimation of the parameters of the Farquhar-von Caemmerer-Berry model of photosynthesis. *New Phytol.* 2007;176(2):402–14.
 75. Strasser RJ, Tsimilli-Michael M, Qiang S, Goltsev V. Simultaneous in vivo recording of prompt and delayed fluorescence and 820-nm reflection changes during drying and after rehydration of the resurrection plant *Haberlea rhodopensis*. *Biochim Biophys Acta.* 2010;1797(6–7):1313–26.
 76. Strasser RJ, Tsimilli-Michael M, Srivastava A. Analysis of the chlorophyll a fluorescence transient. *Chlorophyll a Fluorescence.* 2004;321–362.
 77. Trevanion SJ, Furbank RT, Ashton AR. NADP-malate dehydrogenase in the C4 plant *Flaveria bidentis* (cosense suppression of activity in mesophyll and bundle-sheath cells and consequences for photosynthesis). *Plant Physiol.* 1997;113(4):1153–65.
 78. Rao IM, Terry N. Leaf phosphate status, photosynthesis, and carbon partitioning in sugar beet I. changes in growth, gas exchange, and Calvin cycle enzymes. *Plant Physiol.* 1989;90(3):814–9.
 79. Bradford MM. A rapid and sensitive method for the quantitation of microgram quantities of protein utilizing the principle of protein-dye binding. *Anal Biochem.* 1976;72(1–2):248–54.
 80. Livak KJ, Schmittgen TD. Analysis of relative gene expression data using real-time quantitative PCR and the 2^{-ΔΔCT} method. *Methods.* 2001;25(4):402–8.

Publisher's Note

Springer Nature remains neutral with regard to jurisdictional claims in published maps and institutional affiliations.

Ready to submit your research? Choose BMC and benefit from:

- fast, convenient online submission
- thorough peer review by experienced researchers in your field
- rapid publication on acceptance
- support for research data, including large and complex data types
- gold Open Access which fosters wider collaboration and increased citations
- maximum visibility for your research: over 100M website views per year

At BMC, research is always in progress.

Learn more [biomedcentral.com/submissions](https://www.biomedcentral.com/submissions)

